

**Quality ID #24: Communication with the Physician or Other Clinician Managing On-Going Care Post-Fracture for Men and Women Aged 50 Years and Older**

- National Quality Strategy Domain: Communication and Care Coordination
- Meaningful Measure Area: Transfer of Health Information and Interoperability

**2020 COLLECTION TYPE:**  
**MEDICARE PART B CLAIMS**

**MEASURE TYPE:**  
Process – High Priority

**DESCRIPTION:**

Percentage of patients aged 50 years and older treated for a fracture with documentation of communication, between the physician treating the fracture and the physician or other clinician managing the patient's on-going care, that a fracture occurred and that the patient was or should be considered for osteoporosis treatment or testing. This measure is submitted by the physician who treats the fracture and who therefore is held accountable for the communication

**INSTRUCTIONS:**

This measure is to be submitted after **each occurrence** of a fracture during the performance period. It is anticipated that Merit-based Incentive Payment System (MIPS) eligible clinicians who treat the fracture will submit this measure. Each occurrence of a fracture is identified by either an ICD- 10-CM diagnosis code for fracture or osteoporosis and a CPT service code OR an ICD-10-CM diagnosis code for fracture or osteoporosis and a CPT procedure code for surgical treatment of a fracture.

***NOTE:*** Patients with a fracture should have documentation in the medical record of communication from the clinician treating the fracture to the clinician managing the patient's on-going care that the fracture occurred and that the patient was or should be tested or treated for osteoporosis. If multiple fractures occurring on the same date of service are submitted on the same claim form, only one instance of submission will be counted. Claims data will be analyzed to determine unique occurrences. Documentation must indicate that communication to the MIPS eligible clinician managing the on- going care of the patient occurred within three months of treatment for the fracture. The CPT Category II code should be submitted during the episode of care (e.g., treatment of the fracture). The submission of the code and documentation of communication do not need to occur simultaneously.

**Measure Submission Type:**

Measure data may be submitted by individual MIPS eligible clinicians using Medicare Part B claims. The listed denominator criteria are used to identify the intended patient population. The numerator quality-data codes included in this specification are used to submit the quality actions allowed by the measure on the claim form(s). All measure-specific coding should be submitted on the claim(s) representing the denominator eligible encounter and selected numerator option.

**DENOMINATOR:**

Adults aged 50 years and older who experienced a fracture, except fractures of the finger, toe, face or skull  
Eligible cases are determined, and must be reported, if either of the following conditions

**Option 1 - Denominator Criteria (Eligible Cases):**

Patients aged  $\geq 50$  years on date of encounter

**AND**

**Diagnosis for a fracture, except fractures of the finger, toe, face or skull (ICD-10-CM):** M48.40XA, M48.41XA, M48.42XA, M48.43XA, M48.44XA, M48.45XA, M48.46XA, M48.47XA, M48.48XA, M84.311A,

M84.312A, M84.319A, M84.321A, M84.322A, M84.329A, M84.331A, M84.332A, M84.333A, M84.334A,  
M84.339A, M84.341A, M84.342A, M84.343A, M84.350A, M84.351A, M84.352A, M84.353A, M84.359A,  
M84.361A, M84.362A, M84.363A, M84.364A, M84.369A, M84.371A, M84.372A, M84.373A, M84.374A,  
M84.375A, M84.376A, M84.38XA, M84.750A, M84.751A, M84.752A, M84.753A, M84.754A, M84.755A,  
M84.756A, M84.757A, M84.759A, S12.000A, S12.000B, S12.001A, S12.001B, S12.01XA, S12.01XB,  
S12.02XA, S12.02XB, S12.030A, S12.030B, S12.031A, S12.031B, S12.040A, S12.040B, S12.041A,  
S12.041B, S12.090A, S12.090B, S12.091A, S12.091B, S12.100A, S12.100B, S12.101A, S12.101B,  
S12.110A, S12.110B, S12.111A, S12.111B, S12.112A, S12.112B, S12.120A, S12.120B, S12.121A,  
S12.121B, S12.130A, S12.130B, S12.131A, S12.131B, S12.14XA, S12.14XB, S12.150A, S12.150B,  
S12.151A, S12.151B, S12.190A, S12.190B, S12.191A, S12.191B, S12.200A, S12.200B, S12.201A,  
S12.201B, S12.230A, S12.230B, S12.231A, S12.231B, S12.24XA, S12.24XB, S12.250A, S12.250B,  
S12.251A, S12.251B, S12.290A, S12.290B, S12.291A, S12.291B, S12.300A, S12.300B, S12.301A,  
S12.301B, S12.330A, S12.330B, S12.331A, S12.331B, S12.34XA, S12.34XB, S12.350A, S12.350B,  
S12.351A, S12.351B, S12.390A, S12.390B, S12.391A, S12.391B, S12.400A, S12.400B, S12.401A,  
S12.401B, S12.430A, S12.430B, S12.431A, S12.431B, S12.44XA, S12.44XB, S12.450A, S12.450B,  
S12.451A, S12.451B, S12.490A, S12.490B, S12.491A, S12.491B, S12.500A, S12.500B, S12.501A,  
S12.501B, S12.530A, S12.530B, S12.531A, S12.531B, S12.54XA, S12.54XB, S12.550A, S12.550B,  
S12.551A, S12.551B, S12.590A, S12.590B, S12.591A, S12.591B, S12.600A, S12.600B, S12.601A,  
S12.601B, S12.630A, S12.630B, S12.631A, S12.631B, S12.64XA, S12.64XB, S12.650A, S12.650B,  
S12.651A, S12.651B, S12.690A, S12.690B, S12.691A, S12.691B, S12.8XXA, S12.9XXA, S22.000A,  
S22.000B, S22.001A, S22.001B, S22.002A, S22.002B, S22.008A, S22.008B, S22.009A, S22.009B,  
S22.010A, S22.010B, S22.011A, S22.011B, S22.012A, S22.012B, S22.018A, S22.018B, S22.019A,  
S22.019B, S22.020A, S22.020B, S22.021A, S22.021B, S22.022A, S22.022B, S22.028A, S22.028B,  
S22.029A, S22.029B, S22.030A, S22.030B, S22.031A, S22.031B, S22.032A, S22.032B, S22.038A,  
S22.038B, S22.039A, S22.039B, S22.040A, S22.040B, S22.041A, S22.041B, S22.042A, S22.042B,  
S22.048A, S22.048B, S22.049A, S22.049B, S22.050A, S22.050B, S22.051A, S22.051B, S22.052A,  
S22.052B, S22.058A, S22.058B, S22.059A, S22.059B, S22.060A, S22.060B, S22.061A, S22.061B,  
S22.062A, S22.062B, S22.068A, S22.068B, S22.069A, S22.069B, S22.070A, S22.070B, S22.071A,  
S22.071B, S22.072A, S22.072B, S22.078A, S22.078B, S22.079A, S22.079B, S22.080A, S22.080B,  
S22.081A, S22.081B, S22.082A, S22.082B, S22.088A, S22.088B, S22.089A, S22.089B, S22.20XA,  
S22.20XB, S22.21XA, S22.21XB, S22.22XA, S22.22XB, S22.23XA, S22.23XB, S22.24XA, S22.24XB,  
S22.31XA, S22.31XB, S22.32XA, S22.32XB, S22.39XA, S22.39XB, S22.41XA, S22.41XB, S22.42XA,  
S22.42XB, S22.43XA, S22.43XB, S22.49XA, S22.49XB, S22.5XXA, S22.5XXB, S22.9XXA, S22.9XXB,  
S32.000A, S32.000B, S32.001A, S32.001B, S32.002A, S32.002B, S32.008A, S32.008B, S32.009A,  
S32.009B, S32.010A, S32.010B, S32.011A, S32.011B, S32.012A, S32.012B, S32.018A, S32.018B,  
S32.019A, S32.019B, S32.020A, S32.020B, S32.021A, S32.021B, S32.022A, S32.022B, S32.028A,  
S32.028B, S32.029A, S32.029B, S32.030A, S32.030B, S32.031A, S32.031B, S32.032A, S32.032B,  
S32.038A, S32.038B, S32.039A, S32.039B, S32.040A, S32.040B, S32.041A, S32.041B, S32.042A,  
S32.042B, S32.048A, S32.048B, S32.049A, S32.049B, S32.050A, S32.050B, S32.051A, S32.051B,  
S32.052A, S32.052B, S32.058A, S32.058B, S32.059A, S32.059B, S32.10XA, S32.10XB, S32.110A,  
S32.110B, S32.111A, S32.111B, S32.112A, S32.112B, S32.119A, S32.119B, S32.120A, S32.120B,  
S32.121A, S32.121B, S32.122A, S32.122B, S32.129A, S32.129B, S32.130A, S32.130B, S32.131A,  
S32.131B, S32.132A, S32.132B, S32.139A, S32.139B, S32.14XA, S32.14XB, S32.15XA, S32.15XB,  
S32.16XA, S32.16XB, S32.17XA, S32.17XB, S32.19XA, S32.19XB, S32.2XXA, S32.2XXB, S32.301A,  
S32.301B, S32.302A, S32.302B, S32.309A, S32.309B, S32.311A, S32.311B, S32.312A, S32.312B,  
S32.313A, S32.313B, S32.314A, S32.314B, S32.315A, S32.315B, S32.316A, S32.316B, S32.391A,  
S32.391B, S32.392A, S32.392B, S32.399A, S32.399B, S32.401A, S32.401B, S32.402A, S32.402B,  
S32.409A, S32.409B, S32.411A, S32.411B, S32.412A, S32.412B, S32.413A, S32.413B, S32.414A,  
S32.414B, S32.415A, S32.415B, S32.416A, S32.416B, S32.421A, S32.421B, S32.422A, S32.422B,  
S32.423A, S32.423B, S32.424A, S32.424B, S32.425A, S32.425B, S32.426A, S32.426B, S32.431A,  
S32.431B, S32.432A, S32.432B, S32.433A, S32.433B, S32.434A, S32.434B, S32.435A, S32.435B,



S42.452B, S42.453A, S42.453B, S42.454A, S42.454B, S42.455A, S42.455B, S42.456A, S42.456B, S42.461A, S42.461B, S42.462A, S42.462B, S42.463A, S42.463B, S42.464A, S42.464B, S42.465A, S42.465B, S42.466A, S42.466B, S42.471A, S42.471B, S42.472A, S42.472B, S42.473A, S42.473B, S42.474A, S42.474B, S42.475A, S42.475B, S42.476A, S42.476B, S42.481A, S42.482A, S42.489A, S42.491A, S42.491B, S42.492A, S42.492B, S42.493A, S42.493B, S42.494A, S42.494B, S42.495A, S42.495B, S42.496A, S42.496B, S42.90XA, S42.90XB, S42.91XA, S42.91XB, S42.92XA, S42.92XB, S49.001A, S49.002A, S49.009A, S49.011A, S49.012A, S49.019A, S49.021A, S49.022A, S49.029A, S49.031A, S49.032A, S49.039A, S49.041A, S49.042A, S49.049A, S49.091A, S49.092A, S49.099A, S49.101A, S49.102A, S49.109A, S49.111A, S49.112A, S49.119A, S49.121A, S49.122A, S49.129A, S49.131A, S49.132A, S49.139A, S49.141A, S49.142A, S49.149A, S49.191A, S49.192A, S49.199A, S52.001A, S52.001B, S52.001C, S52.002A, S52.002B, S52.002C, S52.009A, S52.009B, S52.009C, S52.011A, S52.012A, S52.019A, S52.021A, S52.021B, S52.021C, S52.022A, S52.022B, S52.022C, S52.023A, S52.023B, S52.023C, S52.024A, S52.024B, S52.024C, S52.025A, S52.025B, S52.025C, S52.026A, S52.026B, S52.026C, S52.031A, S52.031B, S52.031C, S52.032A, S52.032B, S52.032C, S52.033A, S52.033B, S52.033C, S52.034A, S52.034B, S52.034C, S52.035A, S52.035B, S52.035C, S52.036A, S52.036B, S52.036C, S52.041A, S52.041B, S52.041C, S52.042A, S52.042B, S52.042C, S52.043A, S52.043B, S52.043C, S52.044A, S52.044B, S52.044C, S52.045A, S52.045B, S52.045C, S52.046A, S52.046B, S52.046C, S52.091A, S52.091B, S52.091C, S52.092A, S52.092B, S52.092C, S52.099A, S52.099B, S52.099C, S52.101A, S52.101B, S52.101C, S52.102A, S52.102B, S52.102C, S52.109A, S52.109B, S52.109C, S52.111A, S52.112A, S52.119A, S52.121A, S52.121B, S52.121C, S52.122A, S52.122B, S52.122C, S52.123A, S52.123B, S52.123C, S52.124A, S52.124B, S52.124C, S52.125A, S52.125B, S52.125C, S52.126A, S52.126B, S52.126C, S52.131A, S52.131B, S52.131C, S52.132A, S52.132B, S52.132C, S52.133A, S52.133B, S52.133C, S52.134A, S52.134B, S52.134C, S52.135A, S52.135B, S52.135C, S52.136A, S52.136B, S52.136C, S52.181A, S52.181B, S52.181C, S52.182A, S52.182B, S52.182C, S52.189A, S52.189B, S52.189C, S52.201A, S52.201B, S52.201C, S52.202A, S52.202B, S52.202C, S52.209A, S52.209B, S52.209C, S52.211A, S52.212A, S52.219A, S52.221A, S52.221B, S52.221C, S52.222A, S52.222B, S52.222C, S52.223A, S52.223B, S52.223C, S52.224A, S52.224B, S52.224C, S52.225A, S52.225B, S52.225C, S52.226A, S52.226B, S52.226C, S52.231A, S52.231B, S52.231C, S52.232A, S52.232B, S52.232C, S52.233A, S52.233B, S52.233C, S52.234A, S52.234B, S52.234C, S52.235A, S52.235B, S52.235C, S52.236A, S52.236B, S52.236C, S52.241A, S52.241B, S52.241C, S52.242A, S52.242B, S52.242C, S52.243A, S52.243B, S52.243C, S52.244A, S52.244B, S52.244C, S52.245A, S52.245B, S52.245C, S52.246A, S52.246B, S52.246C, S52.251A, S52.251B, S52.251C, S52.252A, S52.252B, S52.252C, S52.253A, S52.253B, S52.253C, S52.254A, S52.254B, S52.254C, S52.255A, S52.255B, S52.255C, S52.256A, S52.256B, S52.256C, S52.261A, S52.261B, S52.261C, S52.262A, S52.262B, S52.262C, S52.263A, S52.263B, S52.263C, S52.264A, S52.264B, S52.264C, S52.265A, S52.265B, S52.265C, S52.266A, S52.266B, S52.266C, S52.271A, S52.271B, S52.271C, S52.272A, S52.272B, S52.272C, S52.279A, S52.279B, S52.279C, S52.281A, S52.281B, S52.281C, S52.282A, S52.282B, S52.282C, S52.283A, S52.283B, S52.283C, S52.291A, S52.291B, S52.291C, S52.292A, S52.292B, S52.292C, S52.299A, S52.299B, S52.299C, S52.301A, S52.301B, S52.301C, S52.302A, S52.302B, S52.302C, S52.309A, S52.309B, S52.309C, S52.311A, S52.312A, S52.319A, S52.321A, S52.321B, S52.321C, S52.322A, S52.322B, S52.322C, S52.323A, S52.323B, S52.323C, S52.324A, S52.324B, S52.324C, S52.325A, S52.325B, S52.325C, S52.326A, S52.326B, S52.326C, S52.331A, S52.331B, S52.331C, S52.332A, S52.332B, S52.332C, S52.333A, S52.333B, S52.333C, S52.334A, S52.334B, S52.334C, S52.335A, S52.335B, S52.335C, S52.336A, S52.336B, S52.336C, S52.341A, S52.341B, S52.341C, S52.342A, S52.342B, S52.342C, S52.343A, S52.343B, S52.343C, S52.344A, S52.344B, S52.344C, S52.345A, S52.345B, S52.345C, S52.346A, S52.346B, S52.346C, S52.351A, S52.351B, S52.351C, S52.352A, S52.352B, S52.352C, S52.353A, S52.353B, S52.353C, S52.354A, S52.354B, S52.354C, S52.355A, S52.355B, S52.355C, S52.356A, S52.356B, S52.356C, S52.361A, S52.361B, S52.361C, S52.362A, S52.362B, S52.362C, S52.363A, S52.363B, S52.363C, S52.364A, S52.364B, S52.364C, S52.365A, S52.365B, S52.365C, S52.366A, S52.366B, S52.366C, S52.371A, S52.371B, S52.371C, S52.372A, S52.372B, S52.372C,

S52.379A, S52.379B, S52.379C, S52.381A, S52.381B, S52.381C, S52.382A, S52.382B, S52.382C,  
 S52.389A, S52.389B, S52.389C, S52.391A, S52.391B, S52.391C, S52.392A, S52.392B, S52.392C,  
 S52.399A, S52.399B, S52.399C, S52.501A, S52.501B, S52.501C, S52.502A, S52.502B, S52.502C,  
 S52.509A, S52.509B, S52.509C, S52.511A, S52.511B, S52.511C, S52.512A, S52.512B, S52.512C,  
 S52.513A, S52.513B, S52.513C, S52.514A, S52.514B, S52.514C, S52.515A, S52.515B, S52.515C,  
 S52.516A, S52.516B, S52.516C, S52.521A, S52.522A, S52.529A, S52.531A, S52.531B, S52.531C,  
 S52.532A, S52.532B, S52.532C, S52.539A, S52.539B, S52.539C, S52.541A, S52.541B, S52.541C,  
 S52.542A, S52.542B, S52.542C, S52.549A, S52.549B, S52.549C, S52.551A, S52.551B, S52.551C,  
 S52.552A, S52.552B, S52.552C, S52.559A, S52.559B, S52.559C, S52.561A, S52.561B, S52.561C,  
 S52.562A, S52.562B, S52.562C, S52.569A, S52.569B, S52.569C, S52.571A, S52.571B, S52.571C,  
 S52.572A, S52.572B, S52.572C, S52.579A, S52.579B, S52.579C, S52.591A, S52.591B, S52.591C,  
 S52.592A, S52.592B, S52.592C, S52.599A, S52.599B, S52.599C, S52.601A, S52.601B, S52.601C,  
 S52.602A, S52.602B, S52.602C, S52.609A, S52.609B, S52.609C, S52.611A, S52.611B, S52.611C,  
 S52.612A, S52.612B, S52.612C, S52.613A, S52.613B, S52.613C, S52.614A, S52.614B, S52.614C,  
 S52.615A, S52.615B, S52.615C, S52.616A, S52.616B, S52.616C, S52.621A, S52.622A, S52.629A,  
 S52.691A, S52.691B, S52.691C, S52.692A, S52.692B, S52.692C, S52.699A, S52.699B, S52.699C,  
 S52.90XA, S52.90XB, S52.90XC, S52.91XA, S52.91XB, S52.91XC, S52.92XA, S52.92XB, S52.92XC,  
 S59.001A, S59.002A, S59.009A, S59.011A, S59.012A, S59.019A, S59.021A, S59.022A, S59.029A,  
 S59.031A, S59.032A, S59.039A, S59.041A, S59.042A, S59.049A, S59.091A, S59.092A, S59.099A,  
 S59.101A, S59.102A, S59.109A, S59.111A, S59.112A, S59.119A, S59.121A, S59.122A, S59.129A,  
 S59.131A, S59.132A, S59.139A, S59.141A, S59.142A, S59.149A, S59.191A, S59.192A, S59.199A,  
 S59.201A, S59.202A, S59.209A, S59.211A, S59.212A, S59.219A, S59.221A, S59.222A, S59.229A,  
 S59.231A, S59.232A, S59.239A, S59.241A, S59.242A, S59.249A, S59.291A, S59.292A, S59.299A,  
 S62.001A, S62.001B, S62.002A, S62.002B, S62.009A, S62.009B, S62.011A, S62.011B, S62.012A,  
 S62.012B, S62.013A, S62.013B, S62.014A, S62.014B, S62.015A, S62.015B, S62.016A, S62.016B,  
 S62.021A, S62.021B, S62.022A, S62.022B, S62.023A, S62.023B, S62.024A, S62.024B, S62.025A,  
 S62.025B, S62.026A, S62.026B, S62.031A, S62.031B, S62.032A, S62.032B, S62.033A, S62.033B,  
 S62.034A, S62.034B, S62.035A, S62.035B, S62.036A, S62.036B, S62.101A, S62.101B, S62.102A,  
 S62.102B, S62.109A, S62.109B, S62.111A, S62.111B, S62.112A, S62.112B, S62.113A, S62.113B,  
 S62.114A, S62.114B, S62.115A, S62.115B, S62.116A, S62.116B, S62.121A, S62.121B, S62.122A,  
 S62.122B, S62.123A, S62.123B, S62.124A, S62.124B, S62.125A, S62.125B, S62.126A, S62.126B,  
 S62.131A, S62.131B, S62.132A, S62.132B, S62.133A, S62.133B, S62.134A, S62.134B, S62.135A,  
 S62.135B, S62.136A, S62.136B, S62.141A, S62.141B, S62.142A, S62.142B, S62.143A, S62.143B,  
 S62.144A, S62.144B, S62.145A, S62.145B, S62.146A, S62.146B, S62.151A, S62.151B, S62.152A,  
 S62.152B, S62.153A, S62.153B, S62.154A, S62.154B, S62.155A, S62.155B, S62.156A, S62.156B,  
 S62.161A, S62.161B, S62.162A, S62.162B, S62.163A, S62.163B, S62.164A, S62.164B, S62.165A,  
 S62.165B, S62.166A, S62.166B, S62.171A, S62.171B, S62.172A, S62.172B, S62.173A, S62.173B,  
 S62.174A, S62.174B, S62.175A, S62.175B, S62.176A, S62.176B, S62.181A, S62.181B, S62.182A,  
 S62.182B, S62.183A, S62.183B, S62.184A, S62.184B, S62.185A, S62.185B, S62.186A, S62.186B,  
 S62.201A, S62.201B, S62.202A, S62.202B, S62.209A, S62.209B, S62.211A, S62.211B, S62.212A,  
 S62.212B, S62.213A, S62.213B, S62.221A, S62.221B, S62.222A, S62.222B, S62.223A, S62.223B,  
 S62.224A, S62.224B, S62.225A, S62.225B, S62.226A, S62.226B, S62.231A, S62.231B, S62.232A,  
 S62.232B, S62.233A, S62.233B, S62.234A, S62.234B, S62.235A, S62.235B, S62.236A, S62.236B,  
 S62.241A, S62.241B, S62.242A, S62.242B, S62.243A, S62.243B, S62.244A, S62.244B, S62.245A,  
 S62.245B, S62.246A, S62.246B, S62.251A, S62.251B, S62.252A, S62.252B, S62.253A, S62.253B,  
 S62.254A, S62.254B, S62.255A, S62.255B, S62.256A, S62.256B, S62.291A, S62.291B, S62.292A,  
 S62.292B, S62.299A, S62.299B, S62.300A, S62.300B, S62.301A, S62.301B, S62.302A, S62.302B,  
 S62.303A, S62.303B, S62.304A, S62.304B, S62.305A, S62.305B, S62.306A, S62.306B, S62.307A,  
 S62.307B, S62.308A, S62.308B, S62.309A, S62.309B, S62.310A, S62.310B, S62.311A, S62.311B,  
 S62.312A, S62.312B, S62.313A, S62.313B, S62.314A, S62.314B, S62.315A, S62.315B, S62.316A,  
 S62.316B, S62.317A, S62.317B, S62.318A, S62.318B, S62.319A, S62.319B, S62.320A, S62.320B,

S62.321A, S62.321B, S62.322A, S62.322B, S62.323A, S62.323B, S62.324A, S62.324B, S62.325A, S62.325B, S62.326A, S62.326B, S62.327A, S62.327B, S62.328A, S62.328B, S62.329A, S62.329B, S62.330A, S62.330B, S62.331A, S62.331B, S62.332A, S62.332B, S62.333A, S62.333B, S62.334A, S62.334B, S62.335A, S62.335B, S62.336A, S62.336B, S62.337A, S62.337B, S62.338A, S62.338B, S62.339A, S62.339B, S62.340A, S62.340B, S62.341A, S62.341B, S62.342A, S62.342B, S62.343A, S62.343B, S62.344A, S62.344B, S62.345A, S62.345B, S62.346A, S62.346B, S62.347A, S62.347B, S62.348A, S62.348B, S62.349A, S62.349B, S62.350A, S62.350B, S62.351A, S62.351B, S62.352A, S62.352B, S62.353A, S62.353B, S62.354A, S62.354B, S62.355A, S62.355B, S62.356A, S62.356B, S62.357A, S62.357B, S62.358A, S62.358B, S62.359A, S62.359B, S62.360A, S62.360B, S62.361A, S62.361B, S62.362A, S62.362B, S62.363A, S62.363B, S62.364A, S62.364B, S62.365A, S62.365B, S62.366A, S62.366B, S62.367A, S62.367B, S62.368A, S62.368B, S62.369A, S62.369B, S62.390A, S62.390B, S62.391A, S62.391B, S62.392A, S62.392B, S62.393A, S62.393B, S62.394A, S62.394B, S62.395A, S62.395B, S62.396A, S62.396B, S62.397A, S62.397B, S62.398A, S62.398B, S62.399A, S62.399B, S62.90XA, S62.90XB, S62.91XA, S62.91XB, S62.92XA, S62.92XB, S72.001A, S72.001B, S72.001C, S72.002A, S72.002B, S72.002C, S72.009A, S72.009B, S72.009C, S72.011A, S72.011B, S72.011C, S72.012A, S72.012B, S72.012C, S72.019A, S72.019B, S72.019C, S72.021A, S72.021B, S72.021C, S72.022A, S72.022B, S72.022C, S72.023A, S72.023B, S72.023C, S72.024A, S72.024B, S72.024C, S72.025A, S72.025B, S72.025C, S72.026A, S72.026B, S72.026C, S72.031A, S72.031B, S72.031C, S72.032A, S72.032B, S72.032C, S72.033A, S72.033B, S72.033C, S72.034A, S72.034B, S72.034C, S72.035A, S72.035B, S72.035C, S72.036A, S72.036B, S72.036C, S72.041A, S72.041B, S72.041C, S72.042A, S72.042B, S72.042C, S72.043A, S72.043B, S72.043C, S72.044A, S72.044B, S72.044C, S72.045A, S72.045B, S72.045C, S72.046A, S72.046B, S72.046C, S72.051A, S72.051B, S72.051C, S72.052A, S72.052B, S72.052C, S72.059A, S72.059B, S72.059C, S72.061A, S72.061B, S72.061C, S72.062A, S72.062B, S72.062C, S72.063A, S72.063B, S72.063C, S72.064A, S72.064B, S72.064C, S72.065A, S72.065B, S72.065C, S72.066A, S72.066B, S72.066C, S72.091A, S72.091B, S72.091C, S72.092A, S72.092B, S72.092C, S72.099A, S72.099B, S72.099C, S72.101A, S72.101B, S72.101C, S72.102A, S72.102B, S72.102C, S72.109A, S72.109B, S72.109C, S72.111A, S72.111B, S72.111C, S72.112A, S72.112B, S72.112C, S72.113A, S72.113B, S72.113C, S72.114A, S72.114B, S72.114C, S72.115A, S72.115B, S72.115C, S72.116A, S72.116B, S72.116C, S72.121A, S72.121B, S72.121C, S72.122A, S72.122B, S72.122C, S72.123A, S72.123B, S72.123C, S72.124A, S72.124B, S72.124C, S72.125A, S72.125B, S72.125C, S72.126A, S72.126B, S72.126C, S72.131A, S72.131B, S72.131C, S72.132A, S72.132B, S72.132C, S72.133A, S72.133B, S72.133C, S72.134A, S72.134B, S72.134C, S72.135A, S72.135B, S72.135C, S72.136A, S72.136B, S72.136C, S72.141A, S72.141B, S72.141C, S72.142A, S72.142B, S72.142C, S72.143A, S72.143B, S72.143C, S72.144A, S72.144B, S72.144C, S72.145A, S72.145B, S72.145C, S72.146A, S72.146B, S72.146C, S72.21XA, S72.21XB, S72.21XC, S72.22XA, S72.22XB, S72.22XC, S72.23XA, S72.23XB, S72.23XC, S72.24XA, S72.24XB, S72.24XC, S72.25XA, S72.25XB, S72.25XC, S72.26XA, S72.26XB, S72.26XC, S72.301A, S72.301B, S72.301C, S72.302A, S72.302B, S72.302C, S72.309A, S72.309B, S72.309C, S72.321A, S72.321B, S72.321C, S72.322A, S72.322B, S72.322C, S72.323A, S72.323B, S72.323C, S72.324A, S72.324B, S72.324C, S72.325A, S72.325B, S72.325C, S72.326A, S72.326B, S72.326C, S72.331A, S72.331B, S72.331C, S72.332A, S72.332B, S72.332C, S72.333A, S72.333B, S72.333C, S72.334A, S72.334B, S72.334C, S72.335A, S72.335B, S72.335C, S72.336A, S72.336B, S72.336C, S72.341A, S72.341B, S72.341C, S72.342A, S72.342B, S72.342C, S72.343A, S72.343B, S72.343C, S72.344A, S72.344B, S72.344C, S72.345A, S72.345B, S72.345C, S72.346A, S72.346B, S72.346C, S72.351A, S72.351B, S72.351C, S72.352A, S72.352B, S72.352C, S72.353A, S72.353B, S72.353C, S72.354A, S72.354B, S72.354C, S72.355A, S72.355B, S72.355C, S72.356A, S72.356B, S72.356C, S72.361A, S72.361B, S72.361C, S72.362A, S72.362B, S72.362C, S72.363A, S72.363B, S72.363C, S72.364A, S72.364B, S72.364C, S72.365A, S72.365B, S72.365C, S72.366A, S72.366B, S72.366C, S72.391A, S72.391B, S72.391C, S72.392A, S72.392B, S72.392C, S72.399A, S72.399B, S72.399C, S72.401A, S72.401B, S72.401C, S72.402A, S72.402B, S72.402C, S72.409A, S72.409B, S72.409C, S72.411A, S72.411B, S72.411C, S72.412A, S72.412B, S72.412C, S72.413A, S72.413B, S72.413C, S72.414A, S72.414B,

S72.414C, S72.415A, S72.415B, S72.415C, S72.416A, S72.416B, S72.416C, S72.421A, S72.421B, S72.421C, S72.422A, S72.422B, S72.422C, S72.423A, S72.423B, S72.423C, S72.424A, S72.424B, S72.424C, S72.425A, S72.425B, S72.425C, S72.426A, S72.426B, S72.426C, S72.431A, S72.431B, S72.431C, S72.432A, S72.432B, S72.432C, S72.433A, S72.433B, S72.433C, S72.434A, S72.434B, S72.434C, S72.435A, S72.435B, S72.435C, S72.436A, S72.436B, S72.436C, S72.441A, S72.441B, S72.441C, S72.442A, S72.442B, S72.442C, S72.443A, S72.443B, S72.443C, S72.444A, S72.444B, S72.444C, S72.445A, S72.445B, S72.445C, S72.446A, S72.446B, S72.446C, S72.451A, S72.451B, S72.451C, S72.452A, S72.452B, S72.452C, S72.453A, S72.453B, S72.453C, S72.454A, S72.454B, S72.454C, S72.455A, S72.455B, S72.455C, S72.456A, S72.456B, S72.456C, S72.461A, S72.461B, S72.461C, S72.462A, S72.462B, S72.462C, S72.463A, S72.463B, S72.463C, S72.464A, S72.464B, S72.464C, S72.465A, S72.465B, S72.465C, S72.466A, S72.466B, S72.466C, S72.471A, S72.472A, S72.479A, S72.491A, S72.491B, S72.491C, S72.492A, S72.492B, S72.492C, S72.499A, S72.499B, S72.499C, S72.8X1A, S72.8X1B, S72.8X1C, S72.8X2A, S72.8X2B, S72.8X2C, S72.8X9A, S72.8X9B, S72.8X9C, S72.90XA, S72.90XB, S72.90XC, S72.91XA, S72.91XB, S72.91XC, S72.92XA, S72.92XB, S72.92XC, S79.001A, S79.002A, S79.009A, S79.011A, S79.012A, S79.019A, S79.091A, S79.092A, S79.099A, S79.101A, S79.102A, S79.109A, S79.111A, S79.112A, S79.119A, S79.121A, S79.122A, S79.129A, S79.131A, S79.132A, S79.139A, S79.141A, S79.142A, S79.149A, S79.191A, S79.192A, S79.199A, S82.001A, S82.001B, S82.001C, S82.002A, S82.002B, S82.002C, S82.009A, S82.009B, S82.009C, S82.011A, S82.011B, S82.011C, S82.012A, S82.012B, S82.012C, S82.013A, S82.013B, S82.013C, S82.014A, S82.014B, S82.014C, S82.015A, S82.015B, S82.015C, S82.016A, S82.016B, S82.016C, S82.021A, S82.021B, S82.021C, S82.022A, S82.022B, S82.022C, S82.023A, S82.023B, S82.023C, S82.024A, S82.024B, S82.024C, S82.025A, S82.025B, S82.025C, S82.026A, S82.026B, S82.026C, S82.031A, S82.031B, S82.031C, S82.032A, S82.032B, S82.032C, S82.033A, S82.033B, S82.033C, S82.034A, S82.034B, S82.034C, S82.035A, S82.035B, S82.035C, S82.036A, S82.036B, S82.036C, S82.041A, S82.041B, S82.041C, S82.042A, S82.042B, S82.042C, S82.043A, S82.043B, S82.043C, S82.044A, S82.044B, S82.044C, S82.045A, S82.045B, S82.045C, S82.046A, S82.046B, S82.046C, S82.091A, S82.091B, S82.091C, S82.092A, S82.092B, S82.092C, S82.099A, S82.099B, S82.099C, S82.101A, S82.101B, S82.101C, S82.102A, S82.102B, S82.102C, S82.109A, S82.109B, S82.109C, S82.111A, S82.111B, S82.111C, S82.112A, S82.112B, S82.112C, S82.113A, S82.113B, S82.113C, S82.114A, S82.114B, S82.114C, S82.115A, S82.115B, S82.115C, S82.116A, S82.116B, S82.116C, S82.121A, S82.121B, S82.121C, S82.122A, S82.122B, S82.122C, S82.123A, S82.123B, S82.123C, S82.124A, S82.124B, S82.124C, S82.125A, S82.125B, S82.125C, S82.126A, S82.126B, S82.126C, S82.131A, S82.131B, S82.131C, S82.132A, S82.132B, S82.132C, S82.133A, S82.133B, S82.133C, S82.134A, S82.134B, S82.134C, S82.135A, S82.135B, S82.135C, S82.136A, S82.136B, S82.136C, S82.141A, S82.141B, S82.141C, S82.142A, S82.142B, S82.142C, S82.143A, S82.143B, S82.143C, S82.144A, S82.144B, S82.144C, S82.145A, S82.145B, S82.145C, S82.146A, S82.146B, S82.146C, S82.151A, S82.151B, S82.151C, S82.152A, S82.152B, S82.152C, S82.153A, S82.153B, S82.153C, S82.154A, S82.154B, S82.154C, S82.155A, S82.155B, S82.155C, S82.156A, S82.156B, S82.156C, S82.161A, S82.162A, S82.169A, S82.191A, S82.191B, S82.191C, S82.192A, S82.192B, S82.192C, S82.199A, S82.199B, S82.199C, S82.201A, S82.201B, S82.201C, S82.202A, S82.202B, S82.202C, S82.209A, S82.209B, S82.209C, S82.221A, S82.221B, S82.221C, S82.222A, S82.222B, S82.222C, S82.223A, S82.223B, S82.223C, S82.224A, S82.224B, S82.224C, S82.225A, S82.225B, S82.225C, S82.226A, S82.226B, S82.226C, S82.231A, S82.231B, S82.231C, S82.232A, S82.232B, S82.232C, S82.233A, S82.233B, S82.233C, S82.234A, S82.234B, S82.234C, S82.235A, S82.235B, S82.235C, S82.236A, S82.236B, S82.236C, S82.241A, S82.241B, S82.241C, S82.242A, S82.242B, S82.242C, S82.243A, S82.243B, S82.243C, S82.244A, S82.244B, S82.244C, S82.245A, S82.245B, S82.245C, S82.246A, S82.246B, S82.246C, S82.251A, S82.251B, S82.251C, S82.252A, S82.252B, S82.252C, S82.253A, S82.253B, S82.253C, S82.254A, S82.254B, S82.254C, S82.255A, S82.255B, S82.255C, S82.256A, S82.256B, S82.256C, S82.261A, S82.261B, S82.261C, S82.262A, S82.262B, S82.262C, S82.263A, S82.263B, S82.263C, S82.264A, S82.264B, S82.264C, S82.265A, S82.265B, S82.265C, S82.266A, S82.266B, S82.266C, S82.291A, S82.291B, S82.291C, S82.292A, S82.292B,

S82.292C, S82.299A, S82.299B, S82.299C, S82.301A, S82.301B, S82.301C, S82.302A, S82.302B, S82.302C, S82.309A, S82.309B, S82.309C, S82.311A, S82.312A, S82.319A, S82.391A, S82.391B, S82.391C, S82.392A, S82.392B, S82.392C, S82.399A, S82.399B, S82.399C, S82.401A, S82.401B, S82.401C, S82.402A, S82.402B, S82.402C, S82.409A, S82.409B, S82.409C, S82.421A, S82.421B, S82.421C, S82.422A, S82.422B, S82.422C, S82.423A, S82.423B, S82.423C, S82.424A, S82.424B, S82.424C, S82.425A, S82.425B, S82.425C, S82.426A, S82.426B, S82.426C, S82.431A, S82.431B, S82.431C, S82.432A, S82.432B, S82.432C, S82.433A, S82.433B, S82.433C, S82.434A, S82.434B, S82.434C, S82.435A, S82.435B, S82.435C, S82.436A, S82.436B, S82.436C, S82.441A, S82.441B, S82.441C, S82.442A, S82.442B, S82.442C, S82.443A, S82.443B, S82.443C, S82.444A, S82.444B, S82.444C, S82.445A, S82.445B, S82.445C, S82.446A, S82.446B, S82.446C, S82.451A, S82.451B, S82.451C, S82.452A, S82.452B, S82.452C, S82.453A, S82.453B, S82.453C, S82.454A, S82.454B, S82.454C, S82.455A, S82.455B, S82.455C, S82.456A, S82.456B, S82.456C, S82.461A, S82.461B, S82.461C, S82.462A, S82.462B, S82.462C, S82.463A, S82.463B, S82.463C, S82.464A, S82.464B, S82.464C, S82.465A, S82.465B, S82.465C, S82.466A, S82.466B, S82.466C, S82.491A, S82.491B, S82.491C, S82.492A, S82.492B, S82.492C, S82.499A, S82.499B, S82.499C, S82.51XA, S82.51XB, S82.51XC, S82.52XA, S82.52XB, S82.52XC, S82.53XA, S82.53XB, S82.53XC, S82.54XA, S82.54XB, S82.54XC, S82.55XA, S82.55XB, S82.55XC, S82.56XA, S82.56XB, S82.56XC, S82.61XA, S82.61XB, S82.61XC, S82.62XA, S82.62XB, S82.62XC, S82.63XA, S82.63XB, S82.63XC, S82.64XA, S82.64XB, S82.64XC, S82.65XA, S82.65XB, S82.65XC, S82.66XA, S82.66XB, S82.66XC, S82.811A, S82.812A, S82.819A, S82.821A, S82.822A, S82.829A, S82.831A, S82.831B, S82.831C, S82.832A, S82.832B, S82.832C, S82.839A, S82.839B, S82.839C, S82.841A, S82.841B, S82.841C, S82.842A, S82.842B, S82.842C, S82.843A, S82.843B, S82.843C, S82.844A, S82.844B, S82.844C, S82.845A, S82.845B, S82.845C, S82.846A, S82.846B, S82.846C, S82.851A, S82.851B, S82.851C, S82.852A, S82.852B, S82.852C, S82.853A, S82.853B, S82.853C, S82.854A, S82.854B, S82.854C, S82.855A, S82.855B, S82.855C, S82.856A, S82.856B, S82.856C, S82.861A, S82.861B, S82.861C, S82.862A, S82.862B, S82.862C, S82.863A, S82.863B, S82.863C, S82.864A, S82.864B, S82.864C, S82.865A, S82.865B, S82.865C, S82.866A, S82.866B, S82.866C, S82.871A, S82.871B, S82.871C, S82.872A, S82.872B, S82.872C, S82.873A, S82.873B, S82.873C, S82.874A, S82.874B, S82.874C, S82.875A, S82.875B, S82.875C, S82.876A, S82.876B, S82.876C, S82.891A, S82.891B, S82.891C, S82.892A, S82.892B, S82.892C, S82.899A, S82.899B, S82.899C, S82.90XA, S82.90XB, S82.90XC, S82.91XA, S82.91XB, S82.91XC, S82.92XA, S82.92XB, S82.92XC, S89.001A, S89.002A, S89.009A, S89.011A, S89.012A, S89.019A, S89.021A, S89.022A, S89.029A, S89.031A, S89.032A, S89.039A, S89.041A, S89.042A, S89.049A, S89.091A, S89.092A, S89.099A, S89.101A, S89.102A, S89.109A, S89.111A, S89.112A, S89.119A, S89.121A, S89.122A, S89.129A, S89.131A, S89.132A, S89.139A, S89.141A, S89.142A, S89.149A, S89.191A, S89.192A, S89.199A, S89.201A, S89.202A, S89.209A, S89.211A, S89.212A, S89.219A, S89.221A, S89.222A, S89.229A, S89.291A, S89.292A, S89.299A, S89.301A, S89.302A, S89.309A, S89.311A, S89.312A, S89.319A, S89.321A, S89.322A, S89.329A, S89.391A, S89.392A, S89.399A, S92.001A, S92.001B, S92.002A, S92.002B, S92.009A, S92.009B, S92.011A, S92.011B, S92.012A, S92.012B, S92.013A, S92.013B, S92.014A, S92.014B, S92.015A, S92.015B, S92.016A, S92.016B, S92.021A, S92.021B, S92.022A, S92.022B, S92.023A, S92.023B, S92.024A, S92.024B, S92.025A, S92.025B, S92.026A, S92.026B, S92.031A, S92.031B, S92.032A, S92.032B, S92.033A, S92.033B, S92.034A, S92.034B, S92.035A, S92.035B, S92.036A, S92.036B, S92.041A, S92.041B, S92.042A, S92.042B, S92.043A, S92.043B, S92.044A, S92.044B, S92.045A, S92.045B, S92.046A, S92.046B, S92.051A, S92.051B, S92.052A, S92.052B, S92.053A, S92.053B, S92.054A, S92.054B, S92.055A, S92.055B, S92.056A, S92.056B, S92.061A, S92.061B, S92.062A, S92.062B, S92.063A, S92.063B, S92.064A, S92.064B, S92.065A, S92.065B, S92.066A, S92.066B, S92.101A, S92.101B, S92.102A, S92.102B, S92.109A, S92.109B, S92.111A, S92.111B, S92.112A, S92.112B, S92.113A, S92.113B, S92.114A, S92.114B, S92.115A, S92.115B, S92.116A, S92.116B, S92.121A, S92.121B, S92.122A, S92.122B, S92.123A, S92.123B, S92.124A, S92.124B, S92.125A, S92.125B, S92.126A, S92.126B, S92.131A, S92.131B, S92.132A, S92.132B, S92.133A, S92.133B, S92.134A, S92.134B, S92.135A, S92.135B, S92.136A, S92.136B, S92.141A, S92.141B, S92.142A, S92.142B, S92.143A,



S92.143B, S92.144A, S92.144B, S92.145A, S92.145B, S92.146A, S92.146B, S92.151A, S92.151B, S92.152A, S92.152B, S92.153A, S92.153B, S92.154A, S92.154B, S92.155A, S92.155B, S92.156A, S92.156B, S92.191A, S92.191B, S92.192A, S92.192B, S92.199A, S92.199B, S92.201A, S92.201B, S92.202A, S92.202B, S92.209A, S92.209B, S92.211A, S92.211B, S92.212A, S92.212B, S92.213A, S92.213B, S92.214A, S92.214B, S92.215A, S92.215B, S92.216A, S92.216B, S92.221A, S92.221B, S92.222A, S92.222B, S92.223A, S92.223B, S92.224A, S92.224B, S92.225A, S92.225B, S92.226A, S92.226B, S92.231A, S92.231B, S92.232A, S92.232B, S92.233A, S92.233B, S92.234A, S92.234B, S92.235A, S92.235B, S92.236A, S92.236B, S92.241A, S92.241B, S92.242A, S92.242B, S92.243A, S92.243B, S92.244A, S92.244B, S92.245A, S92.245B, S92.246A, S92.246B, S92.251A, S92.251B, S92.252A, S92.252B, S92.253A, S92.253B, S92.254A, S92.254B, S92.255A, S92.255B, S92.256A, S92.256B, S92.301A, S92.301B, S92.302A, S92.302B, S92.309A, S92.309B, S92.311A, S92.311B, S92.312A, S92.312B, S92.313A, S92.313B, S92.314A, S92.314B, S92.315A, S92.315B, S92.316A, S92.316B, S92.321A, S92.321B, S92.322A, S92.322B, S92.323A, S92.323B, S92.324A, S92.324B, S92.325A, S92.325B, S92.326A, S92.326B, S92.331A, S92.331B, S92.332A, S92.332B, S92.333A, S92.333B, S92.334A, S92.334B, S92.335A, S92.335B, S92.336A, S92.336B, S92.341A, S92.341B, S92.342A, S92.342B, S92.343A, S92.343B, S92.344A, S92.344B, S92.345A, S92.345B, S92.346A, S92.346B, S92.351A, S92.351B, S92.352A, S92.352B, S92.353A, S92.353B, S92.354A, S92.354B, S92.355A, S92.355B, S92.356A, S92.356B, S92.811A, S92.811B, S92.812A, S92.812B, S92.819A, S92.819B, S92.901A, S92.901B, S92.902A, S92.902B, S92.909A, S92.909B, S99.001A, S99.001B, S99.002A, S99.002B, S99.009A, S99.009B, S99.011A, S99.011B, S99.012A, S99.012B, S99.019A, S99.019B, S99.021A, S99.021B, S99.022A, S99.022B, S99.029A, S99.029B, S99.031A, S99.031B, S99.032A, S99.032B, S99.039A, S99.039B, S99.041A, S99.041B, S99.042A, S99.042B, S99.049A, S99.049B, S99.091A, S99.091B, S99.092A, S99.092B, S99.099A, S99.099B, S99.101A, S99.101B, S99.102A, S99.102B, S99.109A, S99.109B, S99.111A, S99.111B, S99.112A, S99.112B, S99.119A, S99.119B, S99.121A, S99.121B, S99.122A, S99.122B, S99.129A, S99.129B, S99.131A, S99.131B, S99.132A, S99.132B, S99.139A, S99.139B, S99.141A, S99.141B, S99.142A, S99.142B, S99.149A, S99.149B, S99.191A, S99.191B, S99.192A, S99.192B, S99.199A, S99.199B

**AND**

**Patient encounter during the performance period (CPT or HCPCS):** 99201, 99202, 99203, 99204, 99205, 99212, 99213, 99214, 99215, G0402

**OR**

**Option 2 - Denominator Criteria (Eligible Cases):**

Patients aged ≥ 50 years on the date of encounter

**AND**

**Diagnosis for a fracture, except fractures of the finger, toe, face or skull (ICD-10-CM):** M48.40XA, M48.41XA, M48.42XA, M48.43XA, M48.44XA, M48.45XA, M48.46XA, M48.47XA, M48.48XA, M84.311A, M84.312A, M84.319A, M84.321A, M84.322A, M84.329A, M84.331A, M84.332A, M84.333A, M84.334A, M84.339A, M84.341A, M84.342A, M84.343A, M84.350A, M84.351A, M84.352A, M84.353A, M84.359A, M84.361A, M84.362A, M84.363A, M84.364A, M84.369A, M84.371A, M84.372A, M84.373A, M84.374A, M84.375A, M84.376A, M84.38XA, M84.750A, M84.751A, M84.752A, M84.753A, M84.754A, M84.755A, M84.756A, M84.757A, M84.759A, S12.000A, S12.000B, S12.001A, S12.001B, S12.01XA, S12.01XB, S12.02XA, S12.02XB, S12.030A, S12.030B, S12.031A, S12.031B, S12.040A, S12.040B, S12.041A, S12.041B, S12.090A, S12.090B, S12.091A, S12.091B, S12.100A, S12.100B, S12.101A, S12.101B, S12.110A, S12.110B, S12.111A, S12.111B, S12.112A, S12.112B, S12.120A, S12.120B, S12.121A, S12.121B, S12.130A, S12.130B, S12.131A, S12.131B, S12.14XA, S12.14XB, S12.150A, S12.150B, S12.151A, S12.151B, S12.190A, S12.190B, S12.191A, S12.191B, S12.200A, S12.200B, S12.201A, S12.201B, S12.230A, S12.230B, S12.231A, S12.231B, S12.24XA, S12.24XB, S12.250A, S12.250B, S12.251A, S12.251B, S12.290A, S12.290B, S12.291A, S12.291B, S12.300A, S12.300B, S12.301A, S12.301B, S12.330A, S12.330B, S12.331A, S12.331B, S12.34XA, S12.34XB, S12.350A, S12.350B, S12.351A, S12.351B, S12.390A, S12.390B, S12.391A, S12.391B, S12.400A, S12.400B, S12.401A, S12.401B, S12.430A, S12.430B, S12.431A, S12.431B, S12.44XA, S12.44XB, S12.450A, S12.450B,

S12.451A, S12.451B, S12.490A, S12.490B, S12.491A, S12.491B, S12.500A, S12.500B, S12.501A, S12.501B, S12.530A, S12.530B, S12.531A, S12.531B, S12.54XA, S12.54XB, S12.550A, S12.550B, S12.551A, S12.551B, S12.590A, S12.590B, S12.591A, S12.591B, S12.600A, S12.600B, S12.601A, S12.601B, S12.630A, S12.630B, S12.631A, S12.631B, S12.64XA, S12.64XB, S12.650A, S12.650B, S12.651A, S12.651B, S12.690A, S12.690B, S12.691A, S12.691B, S12.8XXA, S12.9XXA, S22.000A, S22.000B, S22.001A, S22.001B, S22.002A, S22.002B, S22.008A, S22.008B, S22.009A, S22.009B, S22.010A, S22.010B, S22.011A, S22.011B, S22.012A, S22.012B, S22.018A, S22.018B, S22.019A, S22.019B, S22.020A, S22.020B, S22.021A, S22.021B, S22.022A, S22.022B, S22.028A, S22.028B, S22.029A, S22.029B, S22.030A, S22.030B, S22.031A, S22.031B, S22.032A, S22.032B, S22.038A, S22.038B, S22.039A, S22.039B, S22.040A, S22.040B, S22.041A, S22.041B, S22.042A, S22.042B, S22.048A, S22.048B, S22.049A, S22.049B, S22.050A, S22.050B, S22.051A, S22.051B, S22.052A, S22.052B, S22.058A, S22.058B, S22.059A, S22.059B, S22.060A, S22.060B, S22.061A, S22.061B, S22.062A, S22.062B, S22.068A, S22.068B, S22.069A, S22.069B, S22.070A, S22.070B, S22.071A, S22.071B, S22.072A, S22.072B, S22.078A, S22.078B, S22.079A, S22.079B, S22.080A, S22.080B, S22.081A, S22.081B, S22.082A, S22.082B, S22.088A, S22.088B, S22.089A, S22.089B, S22.20XA, S22.20XB, S22.21XA, S22.21XB, S22.22XA, S22.22XB, S22.23XA, S22.23XB, S22.24XA, S22.24XB, S22.31XA, S22.31XB, S22.32XA, S22.32XB, S22.39XA, S22.39XB, S22.41XA, S22.41XB, S22.42XA, S22.42XB, S22.43XA, S22.43XB, S22.49XA, S22.49XB, S22.5XXA, S22.5XXB, S22.9XXA, S22.9XXB, S32.000A, S32.000B, S32.001A, S32.001B, S32.002A, S32.002B, S32.008A, S32.008B, S32.009A, S32.009B, S32.010A, S32.010B, S32.011A, S32.011B, S32.012A, S32.012B, S32.018A, S32.018B, S32.019A, S32.019B, S32.020A, S32.020B, S32.021A, S32.021B, S32.022A, S32.022B, S32.028A, S32.028B, S32.029A, S32.029B, S32.030A, S32.030B, S32.031A, S32.031B, S32.032A, S32.032B, S32.038A, S32.038B, S32.039A, S32.039B, S32.040A, S32.040B, S32.041A, S32.041B, S32.042A, S32.042B, S32.048A, S32.048B, S32.049A, S32.049B, S32.050A, S32.050B, S32.051A, S32.051B, S32.052A, S32.052B, S32.058A, S32.058B, S32.059A, S32.059B, S32.10XA, S32.10XB, S32.110A, S32.110B, S32.111A, S32.111B, S32.112A, S32.112B, S32.119A, S32.119B, S32.120A, S32.120B, S32.121A, S32.121B, S32.122A, S32.122B, S32.129A, S32.129B, S32.130A, S32.130B, S32.131A, S32.131B, S32.132A, S32.132B, S32.139A, S32.139B, S32.14XA, S32.14XB, S32.15XA, S32.15XB, S32.16XA, S32.16XB, S32.17XA, S32.17XB, S32.19XA, S32.19XB, S32.2XXA, S32.2XXB, S32.301A, S32.301B, S32.302A, S32.302B, S32.309A, S32.309B, S32.311A, S32.311B, S32.312A, S32.312B, S32.313A, S32.313B, S32.314A, S32.314B, S32.315A, S32.315B, S32.316A, S32.316B, S32.391A, S32.391B, S32.392A, S32.392B, S32.399A, S32.399B, S32.401A, S32.401B, S32.402A, S32.402B, S32.409A, S32.409B, S32.411A, S32.411B, S32.412A, S32.412B, S32.413A, S32.413B, S32.414A, S32.414B, S32.415A, S32.415B, S32.416A, S32.416B, S32.421A, S32.421B, S32.422A, S32.422B, S32.423A, S32.423B, S32.424A, S32.424B, S32.425A, S32.425B, S32.426A, S32.426B, S32.431A, S32.431B, S32.432A, S32.432B, S32.433A, S32.433B, S32.434A, S32.434B, S32.435A, S32.435B, S32.436A, S32.436B, S32.441A, S32.441B, S32.442A, S32.442B, S32.443A, S32.443B, S32.444A, S32.444B, S32.445A, S32.445B, S32.446A, S32.446B, S32.451A, S32.451B, S32.452A, S32.452B, S32.453A, S32.453B, S32.454A, S32.454B, S32.455A, S32.455B, S32.456A, S32.456B, S32.461A, S32.461B, S32.462A, S32.462B, S32.463A, S32.463B, S32.464A, S32.464B, S32.465A, S32.465B, S32.466A, S32.466B, S32.471A, S32.471B, S32.472A, S32.472B, S32.473A, S32.473B, S32.474A, S32.474B, S32.475A, S32.475B, S32.476A, S32.476B, S32.481A, S32.481B, S32.482A, S32.482B, S32.483A, S32.483B, S32.484A, S32.484B, S32.485A, S32.485B, S32.486A, S32.486B, S32.491A, S32.491B, S32.492A, S32.492B, S32.499A, S32.499B, S32.501A, S32.501B, S32.502A, S32.502B, S32.509A, S32.509B, S32.511A, S32.511B, S32.512A, S32.512B, S32.519A, S32.519B, S32.591A, S32.591B, S32.592A, S32.592B, S32.599A, S32.599B, S32.601A, S32.601B, S32.602A, S32.602B, S32.609A, S32.609B, S32.611A, S32.611B, S32.612A, S32.612B, S32.613A, S32.613B, S32.614A, S32.614B, S32.615A, S32.615B, S32.616A, S32.616B, S32.691A, S32.691B, S32.692A, S32.692B, S32.699A, S32.699B, S32.810A, S32.810B, S32.811A, S32.811B, S32.82XA, S32.82XB, S32.89XA, S32.89XB, S32.9XXA, S32.9XXB, S42.001A, S42.001B, S42.002A, S42.002B, S42.009A, S42.009B, S42.011A, S42.011B, S42.012A, S42.012B, S42.013A, S42.013B, S42.014A, S42.014B, S42.015A,

S42.015B, S42.016A, S42.016B, S42.017A, S42.017B, S42.018A, S42.018B, S42.019A, S42.019B,  
 S42.021A, S42.021B, S42.022A, S42.022B, S42.023A, S42.023B, S42.024A, S42.024B, S42.025A,  
 S42.025B, S42.026A, S42.026B, S42.031A, S42.031B, S42.032A, S42.032B, S42.033A, S42.033B,  
 S42.034A, S42.034B, S42.035A, S42.035B, S42.036A, S42.036B, S42.101A, S42.101B, S42.102A,  
 S42.102B, S42.109A, S42.109B, S42.111A, S42.111B, S42.112A, S42.112B, S42.113A, S42.113B,  
 S42.114A, S42.114B, S42.115A, S42.115B, S42.116A, S42.116B, S42.121A, S42.121B, S42.122A,  
 S42.122B, S42.123A, S42.123B, S42.124A, S42.124B, S42.125A, S42.125B, S42.126A, S42.126B,  
 S42.131A, S42.131B, S42.132A, S42.132B, S42.133A, S42.133B, S42.134A, S42.134B, S42.135A,  
 S42.135B, S42.136A, S42.136B, S42.141A, S42.141B, S42.142A, S42.142B, S42.143A, S42.143B,  
 S42.144A, S42.144B, S42.145A, S42.145B, S42.146A, S42.146B, S42.151A, S42.151B, S42.152A,  
 S42.152B, S42.153A, S42.153B, S42.154A, S42.154B, S42.155A, S42.155B, S42.156A, S42.156B,  
 S42.191A, S42.191B, S42.192A, S42.192B, S42.199A, S42.199B, S42.201A, S42.201B, S42.202A,  
 S42.202B, S42.209A, S42.209B, S42.211A, S42.211B, S42.212A, S42.212B, S42.213A, S42.213B,  
 S42.214A, S42.214B, S42.215A, S42.215B, S42.216A, S42.216B, S42.221A, S42.221B, S42.222A,  
 S42.222B, S42.223A, S42.223B, S42.224A, S42.224B, S42.225A, S42.225B, S42.226A, S42.226B,  
 S42.231A, S42.231B, S42.232A, S42.232B, S42.239A, S42.239B, S42.241A, S42.241B, S42.242A,  
 S42.242B, S42.249A, S42.249B, S42.251A, S42.251B, S42.252A, S42.252B, S42.253A, S42.253B,  
 S42.254A, S42.254B, S42.255A, S42.255B, S42.256A, S42.256B, S42.261A, S42.261B, S42.262A,  
 S42.262B, S42.263A, S42.263B, S42.264A, S42.264B, S42.265A, S42.265B, S42.266A, S42.266B,  
 S42.271A, S42.272A, S42.279A, S42.291A, S42.291B, S42.292A, S42.292B, S42.293A, S42.293B,  
 S42.294A, S42.294B, S42.295A, S42.295B, S42.296A, S42.296B, S42.301A, S42.301B, S42.302A,  
 S42.302B, S42.309A, S42.309B, S42.311A, S42.312A, S42.319A, S42.321A, S42.321B, S42.322A,  
 S42.322B, S42.323A, S42.323B, S42.324A, S42.324B, S42.325A, S42.325B, S42.326A, S42.326B,  
 S42.331A, S42.331B, S42.332A, S42.332B, S42.333A, S42.333B, S42.334A, S42.334B, S42.335A,  
 S42.335B, S42.336A, S42.336B, S42.341A, S42.341B, S42.342A, S42.342B, S42.343A, S42.343B,  
 S42.344A, S42.344B, S42.345A, S42.345B, S42.346A, S42.346B, S42.351A, S42.351B, S42.352A,  
 S42.352B, S42.353A, S42.353B, S42.354A, S42.354B, S42.355A, S42.355B, S42.356A, S42.356B,  
 S42.361A, S42.361B, S42.362A, S42.362B, S42.363A, S42.363B, S42.364A, S42.364B, S42.365A,  
 S42.365B, S42.366A, S42.366B, S42.391A, S42.391B, S42.392A, S42.392B, S42.399A, S42.399B,  
 S42.401A, S42.401B, S42.402A, S42.402B, S42.409A, S42.409B, S42.411A, S42.411B, S42.412A,  
 S42.412B, S42.413A, S42.413B, S42.414A, S42.414B, S42.415A, S42.415B, S42.416A, S42.416B,  
 S42.421A, S42.421B, S42.422A, S42.422B, S42.423A, S42.423B, S42.424A, S42.424B, S42.425A,  
 S42.425B, S42.426A, S42.426B, S42.431A, S42.431B, S42.432A, S42.432B, S42.433A, S42.433B,  
 S42.434A, S42.434B, S42.435A, S42.435B, S42.436A, S42.436B, S42.441A, S42.441B, S42.442A,  
 S42.442B, S42.443A, S42.443B, S42.444A, S42.444B, S42.445A, S42.445B, S42.446A, S42.446B,  
 S42.447A, S42.447B, S42.448A, S42.448B, S42.449A, S42.449B, S42.451A, S42.451B, S42.452A,  
 S42.452B, S42.453A, S42.453B, S42.454A, S42.454B, S42.455A, S42.455B, S42.456A, S42.456B,  
 S42.461A, S42.461B, S42.462A, S42.462B, S42.463A, S42.463B, S42.464A, S42.464B, S42.465A,  
 S42.465B, S42.466A, S42.466B, S42.471A, S42.471B, S42.472A, S42.472B, S42.473A, S42.473B,  
 S42.474A, S42.474B, S42.475A, S42.475B, S42.476A, S42.476B, S42.481A, S42.482A, S42.489A,  
 S42.491A, S42.491B, S42.492A, S42.492B, S42.493A, S42.493B, S42.494A, S42.494B, S42.495A,  
 S42.495B, S42.496A, S42.496B, S42.90XA, S42.90XB, S42.91XA, S42.91XB, S42.92XA, S42.92XB,  
 S49.001A, S49.002A, S49.009A, S49.011A, S49.012A, S49.019A, S49.021A, S49.022A, S49.029A,  
 S49.031A, S49.032A, S49.039A, S49.041A, S49.042A, S49.049A, S49.091A, S49.092A, S49.099A,  
 S49.101A, S49.102A, S49.109A, S49.111A, S49.112A, S49.119A, S49.121A, S49.122A, S49.129A,  
 S49.131A, S49.132A, S49.139A, S49.141A, S49.142A, S49.149A, S49.191A, S49.192A, S49.199A,  
 S52.001A, S52.001B, S52.001C, S52.002A, S52.002B, S52.002C, S52.009A, S52.009B, S52.009C,  
 S52.011A, S52.012A, S52.019A, S52.021A, S52.021B, S52.021C, S52.022A, S52.022B, S52.022C,  
 S52.023A, S52.023B, S52.023C, S52.024A, S52.024B, S52.024C, S52.025A, S52.025B, S52.025C,  
 S52.026A, S52.026B, S52.026C, S52.031A, S52.031B, S52.031C, S52.032A, S52.032B, S52.032C,  
 S52.033A, S52.033B, S52.033C, S52.034A, S52.034B, S52.034C, S52.035A, S52.035B, S52.035C,

S52.036A, S52.036B, S52.036C, S52.041A, S52.041B, S52.041C, S52.042A, S52.042B, S52.042C, S52.043A, S52.043B, S52.043C, S52.044A, S52.044B, S52.044C, S52.045A, S52.045B, S52.045C, S52.046A, S52.046B, S52.046C, S52.091A, S52.091B, S52.091C, S52.092A, S52.092B, S52.092C, S52.099A, S52.099B, S52.099C, S52.101A, S52.101B, S52.101C, S52.102A, S52.102B, S52.102C, S52.109A, S52.109B, S52.109C, S52.111A, S52.112A, S52.119A, S52.121A, S52.121B, S52.121C, S52.122A, S52.122B, S52.122C, S52.123A, S52.123B, S52.123C, S52.124A, S52.124B, S52.124C, S52.125A, S52.125B, S52.125C, S52.126A, S52.126B, S52.126C, S52.131A, S52.131B, S52.131C, S52.132A, S52.132B, S52.132C, S52.133A, S52.133B, S52.133C, S52.134A, S52.134B, S52.134C, S52.135A, S52.135B, S52.135C, S52.136A, S52.136B, S52.136C, S52.181A, S52.181B, S52.181C, S52.182A, S52.182B, S52.182C, S52.189A, S52.189B, S52.189C, S52.201A, S52.201B, S52.201C, S52.202A, S52.202B, S52.202C, S52.209A, S52.209B, S52.209C, S52.211A, S52.212A, S52.219A, S52.221A, S52.221B, S52.221C, S52.222A, S52.222B, S52.222C, S52.223A, S52.223B, S52.223C, S52.224A, S52.224B, S52.224C, S52.225A, S52.225B, S52.225C, S52.226A, S52.226B, S52.226C, S52.231A, S52.231B, S52.231C, S52.232A, S52.232B, S52.232C, S52.233A, S52.233B, S52.233C, S52.234A, S52.234B, S52.234C, S52.235A, S52.235B, S52.235C, S52.236A, S52.236B, S52.236C, S52.241A, S52.241B, S52.241C, S52.242A, S52.242B, S52.242C, S52.243A, S52.243B, S52.243C, S52.244A, S52.244B, S52.244C, S52.245A, S52.245B, S52.245C, S52.246A, S52.246B, S52.246C, S52.251A, S52.251B, S52.251C, S52.252A, S52.252B, S52.252C, S52.253A, S52.253B, S52.253C, S52.254A, S52.254B, S52.254C, S52.255A, S52.255B, S52.255C, S52.256A, S52.256B, S52.256C, S52.261A, S52.261B, S52.261C, S52.262A, S52.262B, S52.262C, S52.263A, S52.263B, S52.263C, S52.264A, S52.264B, S52.264C, S52.265A, S52.265B, S52.265C, S52.266A, S52.266B, S52.266C, S52.271A, S52.271B, S52.271C, S52.272A, S52.272B, S52.272C, S52.279A, S52.279B, S52.279C, S52.281A, S52.281B, S52.281C, S52.282A, S52.282B, S52.282C, S52.283A, S52.283B, S52.283C, S52.291A, S52.291B, S52.291C, S52.292A, S52.292B, S52.292C, S52.299A, S52.299B, S52.299C, S52.301A, S52.301B, S52.301C, S52.302A, S52.302B, S52.302C, S52.309A, S52.309B, S52.309C, S52.311A, S52.312A, S52.319A, S52.321A, S52.321B, S52.321C, S52.322A, S52.322B, S52.322C, S52.323A, S52.323B, S52.323C, S52.324A, S52.324B, S52.324C, S52.325A, S52.325B, S52.325C, S52.326A, S52.326B, S52.326C, S52.331A, S52.331B, S52.331C, S52.332A, S52.332B, S52.332C, S52.333A, S52.333B, S52.333C, S52.334A, S52.334B, S52.334C, S52.335A, S52.335B, S52.335C, S52.336A, S52.336B, S52.336C, S52.341A, S52.341B, S52.341C, S52.342A, S52.342B, S52.342C, S52.343A, S52.343B, S52.343C, S52.344A, S52.344B, S52.344C, S52.345A, S52.345B, S52.345C, S52.346A, S52.346B, S52.346C, S52.351A, S52.351B, S52.351C, S52.352A, S52.352B, S52.352C, S52.353A, S52.353B, S52.353C, S52.354A, S52.354B, S52.354C, S52.355A, S52.355B, S52.355C, S52.356A, S52.356B, S52.356C, S52.361A, S52.361B, S52.361C, S52.362A, S52.362B, S52.362C, S52.363A, S52.363B, S52.363C, S52.364A, S52.364B, S52.364C, S52.365A, S52.365B, S52.365C, S52.366A, S52.366B, S52.366C, S52.371A, S52.371B, S52.371C, S52.372A, S52.372B, S52.372C, S52.379A, S52.379B, S52.379C, S52.381A, S52.381B, S52.381C, S52.382A, S52.382B, S52.382C, S52.389A, S52.389B, S52.389C, S52.391A, S52.391B, S52.391C, S52.392A, S52.392B, S52.392C, S52.399A, S52.399B, S52.399C, S52.501A, S52.501B, S52.501C, S52.502A, S52.502B, S52.502C, S52.509A, S52.509B, S52.509C, S52.511A, S52.511B, S52.511C, S52.512A, S52.512B, S52.512C, S52.513A, S52.513B, S52.513C, S52.514A, S52.514B, S52.514C, S52.515A, S52.515B, S52.515C, S52.516A, S52.516B, S52.516C, S52.521A, S52.522A, S52.529A, S52.531A, S52.531B, S52.531C, S52.532A, S52.532B, S52.532C, S52.539A, S52.539B, S52.539C, S52.541A, S52.541B, S52.541C, S52.542A, S52.542B, S52.542C, S52.549A, S52.549B, S52.549C, S52.551A, S52.551B, S52.551C, S52.552A, S52.552B, S52.552C, S52.559A, S52.559B, S52.559C, S52.561A, S52.561B, S52.561C, S52.562A, S52.562B, S52.562C, S52.569A, S52.569B, S52.569C, S52.571A, S52.571B, S52.571C, S52.572A, S52.572B, S52.572C, S52.579A, S52.579B, S52.579C, S52.591A, S52.591B, S52.591C, S52.592A, S52.592B, S52.592C, S52.599A, S52.599B, S52.599C, S52.601A, S52.601B, S52.601C, S52.602A, S52.602B, S52.602C, S52.609A, S52.609B, S52.609C, S52.611A, S52.611B, S52.611C, S52.612A, S52.612B, S52.612C, S52.613A, S52.613B, S52.613C, S52.614A, S52.614B, S52.614C, S52.615A, S52.615B, S52.615C, S52.616A, S52.616B, S52.616C, S52.621A, S52.622A, S52.629A,

S52.691A, S52.691B, S52.691C, S52.692A, S52.692B, S52.692C, S52.699A, S52.699B, S52.699C, S52.90XA, S52.90XB, S52.90XC, S52.91XA, S52.91XB, S52.91XC, S52.92XA, S52.92XB, S52.92XC, S59.001A, S59.002A, S59.009A, S59.011A, S59.012A, S59.019A, S59.021A, S59.022A, S59.029A, S59.031A, S59.032A, S59.039A, S59.041A, S59.042A, S59.049A, S59.091A, S59.092A, S59.099A, S59.101A, S59.102A, S59.109A, S59.111A, S59.112A, S59.119A, S59.121A, S59.122A, S59.129A, S59.131A, S59.132A, S59.139A, S59.141A, S59.142A, S59.149A, S59.191A, S59.192A, S59.199A, S59.201A, S59.202A, S59.209A, S59.211A, S59.212A, S59.219A, S59.221A, S59.222A, S59.229A, S59.231A, S59.232A, S59.239A, S59.241A, S59.242A, S59.249A, S59.291A, S59.292A, S59.299A, S62.001A, S62.001B, S62.002A, S62.002B, S62.009A, S62.009B, S62.011A, S62.011B, S62.012A, S62.012B, S62.013A, S62.013B, S62.014A, S62.014B, S62.015A, S62.015B, S62.016A, S62.016B, S62.021A, S62.021B, S62.022A, S62.022B, S62.023A, S62.023B, S62.024A, S62.024B, S62.025A, S62.025B, S62.026A, S62.026B, S62.031A, S62.031B, S62.032A, S62.032B, S62.033A, S62.033B, S62.034A, S62.034B, S62.035A, S62.035B, S62.036A, S62.036B, S62.101A, S62.101B, S62.102A, S62.102B, S62.109A, S62.109B, S62.111A, S62.111B, S62.112A, S62.112B, S62.113A, S62.113B, S62.114A, S62.114B, S62.115A, S62.115B, S62.116A, S62.116B, S62.121A, S62.121B, S62.122A, S62.122B, S62.123A, S62.123B, S62.124A, S62.124B, S62.125A, S62.125B, S62.126A, S62.126B, S62.131A, S62.131B, S62.132A, S62.132B, S62.133A, S62.133B, S62.134A, S62.134B, S62.135A, S62.135B, S62.136A, S62.136B, S62.141A, S62.141B, S62.142A, S62.142B, S62.143A, S62.143B, S62.144A, S62.144B, S62.145A, S62.145B, S62.146A, S62.146B, S62.151A, S62.151B, S62.152A, S62.152B, S62.153A, S62.153B, S62.154A, S62.154B, S62.155A, S62.155B, S62.156A, S62.156B, S62.161A, S62.161B, S62.162A, S62.162B, S62.163A, S62.163B, S62.164A, S62.164B, S62.165A, S62.165B, S62.166A, S62.166B, S62.171A, S62.171B, S62.172A, S62.172B, S62.173A, S62.173B, S62.174A, S62.174B, S62.175A, S62.175B, S62.176A, S62.176B, S62.181A, S62.181B, S62.182A, S62.182B, S62.183A, S62.183B, S62.184A, S62.184B, S62.185A, S62.185B, S62.186A, S62.186B, S62.201A, S62.201B, S62.202A, S62.202B, S62.209A, S62.209B, S62.211A, S62.211B, S62.212A, S62.212B, S62.213A, S62.213B, S62.221A, S62.221B, S62.222A, S62.222B, S62.223A, S62.223B, S62.224A, S62.224B, S62.225A, S62.225B, S62.226A, S62.226B, S62.231A, S62.231B, S62.232A, S62.232B, S62.233A, S62.233B, S62.234A, S62.234B, S62.235A, S62.235B, S62.236A, S62.236B, S62.241A, S62.241B, S62.242A, S62.242B, S62.243A, S62.243B, S62.244A, S62.244B, S62.245A, S62.245B, S62.246A, S62.246B, S62.251A, S62.251B, S62.252A, S62.252B, S62.253A, S62.253B, S62.254A, S62.254B, S62.255A, S62.255B, S62.256A, S62.256B, S62.291A, S62.291B, S62.292A, S62.292B, S62.299A, S62.299B, S62.300A, S62.300B, S62.301A, S62.301B, S62.302A, S62.302B, S62.303A, S62.303B, S62.304A, S62.304B, S62.305A, S62.305B, S62.306A, S62.306B, S62.307A, S62.307B, S62.308A, S62.308B, S62.309A, S62.309B, S62.310A, S62.310B, S62.311A, S62.311B, S62.312A, S62.312B, S62.313A, S62.313B, S62.314A, S62.314B, S62.315A, S62.315B, S62.316A, S62.316B, S62.317A, S62.317B, S62.318A, S62.318B, S62.319A, S62.319B, S62.320A, S62.320B, S62.321A, S62.321B, S62.322A, S62.322B, S62.323A, S62.323B, S62.324A, S62.324B, S62.325A, S62.325B, S62.326A, S62.326B, S62.327A, S62.327B, S62.328A, S62.328B, S62.329A, S62.329B, S62.330A, S62.330B, S62.331A, S62.331B, S62.332A, S62.332B, S62.333A, S62.333B, S62.334A, S62.334B, S62.335A, S62.335B, S62.336A, S62.336B, S62.337A, S62.337B, S62.338A, S62.338B, S62.339A, S62.339B, S62.340A, S62.340B, S62.341A, S62.341B, S62.342A, S62.342B, S62.343A, S62.343B, S62.344A, S62.344B, S62.345A, S62.345B, S62.346A, S62.346B, S62.347A, S62.347B, S62.348A, S62.348B, S62.349A, S62.349B, S62.350A, S62.350B, S62.351A, S62.351B, S62.352A, S62.352B, S62.353A, S62.353B, S62.354A, S62.354B, S62.355A, S62.355B, S62.356A, S62.356B, S62.357A, S62.357B, S62.358A, S62.358B, S62.359A, S62.359B, S62.360A, S62.360B, S62.361A, S62.361B, S62.362A, S62.362B, S62.363A, S62.363B, S62.364A, S62.364B, S62.365A, S62.365B, S62.366A, S62.366B, S62.367A, S62.367B, S62.368A, S62.368B, S62.369A, S62.369B, S62.390A, S62.390B, S62.391A, S62.391B, S62.392A, S62.392B, S62.393A, S62.393B, S62.394A, S62.394B, S62.395A, S62.395B, S62.396A, S62.396B, S62.397A, S62.397B, S62.398A, S62.398B, S62.399A, S62.399B, S62.90XA, S62.90XB, S62.91XA, S62.91XB, S62.92XA, S62.92XB, S72.001A, S72.001B, S72.001C, S72.002A, S72.002B, S72.002C, S72.009A, S72.009B, S72.009C, S72.011A, S72.011B,

S72.011C, S72.012A, S72.012B, S72.012C, S72.019A, S72.019B, S72.019C, S72.021A, S72.021B, S72.021C, S72.022A, S72.022B, S72.022C, S72.023A, S72.023B, S72.023C, S72.024A, S72.024B, S72.024C, S72.025A, S72.025B, S72.025C, S72.026A, S72.026B, S72.026C, S72.031A, S72.031B, S72.031C, S72.032A, S72.032B, S72.032C, S72.033A, S72.033B, S72.033C, S72.034A, S72.034B, S72.034C, S72.035A, S72.035B, S72.035C, S72.036A, S72.036B, S72.036C, S72.041A, S72.041B, S72.041C, S72.042A, S72.042B, S72.042C, S72.043A, S72.043B, S72.043C, S72.044A, S72.044B, S72.044C, S72.045A, S72.045B, S72.045C, S72.046A, S72.046B, S72.046C, S72.051A, S72.051B, S72.051C, S72.052A, S72.052B, S72.052C, S72.059A, S72.059B, S72.059C, S72.061A, S72.061B, S72.061C, S72.062A, S72.062B, S72.062C, S72.063A, S72.063B, S72.063C, S72.064A, S72.064B, S72.064C, S72.065A, S72.065B, S72.065C, S72.066A, S72.066B, S72.066C, S72.091A, S72.091B, S72.091C, S72.092A, S72.092B, S72.092C, S72.099A, S72.099B, S72.099C, S72.101A, S72.101B, S72.101C, S72.102A, S72.102B, S72.102C, S72.109A, S72.109B, S72.109C, S72.111A, S72.111B, S72.111C, S72.112A, S72.112B, S72.112C, S72.113A, S72.113B, S72.113C, S72.114A, S72.114B, S72.114C, S72.115A, S72.115B, S72.115C, S72.116A, S72.116B, S72.116C, S72.121A, S72.121B, S72.121C, S72.122A, S72.122B, S72.122C, S72.123A, S72.123B, S72.123C, S72.124A, S72.124B, S72.124C, S72.125A, S72.125B, S72.125C, S72.126A, S72.126B, S72.126C, S72.131A, S72.131B, S72.131C, S72.132A, S72.132B, S72.132C, S72.133A, S72.133B, S72.133C, S72.134A, S72.134B, S72.134C, S72.135A, S72.135B, S72.135C, S72.136A, S72.136B, S72.136C, S72.141A, S72.141B, S72.141C, S72.142A, S72.142B, S72.142C, S72.143A, S72.143B, S72.143C, S72.144A, S72.144B, S72.144C, S72.145A, S72.145B, S72.145C, S72.146A, S72.146B, S72.146C, S72.21XA, S72.21XB, S72.21XC, S72.22XA, S72.22XB, S72.22XC, S72.23XA, S72.23XB, S72.23XC, S72.24XA, S72.24XB, S72.24XC, S72.25XA, S72.25XB, S72.25XC, S72.26XA, S72.26XB, S72.26XC, S72.301A, S72.301B, S72.301C, S72.302A, S72.302B, S72.302C, S72.309A, S72.309B, S72.309C, S72.321A, S72.321B, S72.321C, S72.322A, S72.322B, S72.322C, S72.323A, S72.323B, S72.323C, S72.324A, S72.324B, S72.324C, S72.325A, S72.325B, S72.325C, S72.326A, S72.326B, S72.326C, S72.331A, S72.331B, S72.331C, S72.332A, S72.332B, S72.332C, S72.333A, S72.333B, S72.333C, S72.334A, S72.334B, S72.334C, S72.335A, S72.335B, S72.335C, S72.336A, S72.336B, S72.336C, S72.341A, S72.341B, S72.341C, S72.342A, S72.342B, S72.342C, S72.343A, S72.343B, S72.343C, S72.344A, S72.344B, S72.344C, S72.345A, S72.345B, S72.345C, S72.346A, S72.346B, S72.346C, S72.351A, S72.351B, S72.351C, S72.352A, S72.352B, S72.352C, S72.353A, S72.353B, S72.353C, S72.354A, S72.354B, S72.354C, S72.355A, S72.355B, S72.355C, S72.356A, S72.356B, S72.356C, S72.361A, S72.361B, S72.361C, S72.362A, S72.362B, S72.362C, S72.363A, S72.363B, S72.363C, S72.364A, S72.364B, S72.364C, S72.365A, S72.365B, S72.365C, S72.366A, S72.366B, S72.366C, S72.391A, S72.391B, S72.391C, S72.392A, S72.392B, S72.392C, S72.399A, S72.399B, S72.399C, S72.401A, S72.401B, S72.401C, S72.402A, S72.402B, S72.402C, S72.409A, S72.409B, S72.409C, S72.411A, S72.411B, S72.411C, S72.412A, S72.412B, S72.412C, S72.413A, S72.413B, S72.413C, S72.414A, S72.414B, S72.414C, S72.415A, S72.415B, S72.415C, S72.416A, S72.416B, S72.416C, S72.421A, S72.421B, S72.421C, S72.422A, S72.422B, S72.422C, S72.423A, S72.423B, S72.423C, S72.424A, S72.424B, S72.424C, S72.425A, S72.425B, S72.425C, S72.426A, S72.426B, S72.426C, S72.431A, S72.431B, S72.431C, S72.432A, S72.432B, S72.432C, S72.433A, S72.433B, S72.433C, S72.434A, S72.434B, S72.434C, S72.435A, S72.435B, S72.435C, S72.436A, S72.436B, S72.436C, S72.441A, S72.441B, S72.441C, S72.442A, S72.442B, S72.442C, S72.443A, S72.443B, S72.443C, S72.444A, S72.444B, S72.444C, S72.445A, S72.445B, S72.445C, S72.446A, S72.446B, S72.446C, S72.451A, S72.451B, S72.451C, S72.452A, S72.452B, S72.452C, S72.453A, S72.453B, S72.453C, S72.454A, S72.454B, S72.454C, S72.455A, S72.455B, S72.455C, S72.456A, S72.456B, S72.456C, S72.461A, S72.461B, S72.461C, S72.462A, S72.462B, S72.462C, S72.463A, S72.463B, S72.463C, S72.464A, S72.464B, S72.464C, S72.465A, S72.465B, S72.465C, S72.466A, S72.466B, S72.466C, S72.471A, S72.472A, S72.479A, S72.491A, S72.491B, S72.491C, S72.492A, S72.492B, S72.492C, S72.499A, S72.499B, S72.499C, S72.8X1A, S72.8X1B, S72.8X1C, S72.8X2A, S72.8X2B, S72.8X2C, S72.8X9A, S72.8X9B, S72.8X9C, S72.90XA, S72.90XB, S72.90XC, S72.91XA, S72.91XB, S72.91XC, S72.92XA, S72.92XB, S72.92XC, S79.001A, S79.002A, S79.009A, S79.011A, S79.012A, S79.019A, S79.091A, S79.092A,

S79.099A, S79.101A, S79.102A, S79.109A, S79.111A, S79.112A, S79.119A, S79.121A, S79.122A, S79.129A, S79.131A, S79.132A, S79.139A, S79.141A, S79.142A, S79.149A, S79.191A, S79.192A, S79.199A, S82.001A, S82.001B, S82.001C, S82.002A, S82.002B, S82.002C, S82.009A, S82.009B, S82.009C, S82.011A, S82.011B, S82.011C, S82.012A, S82.012B, S82.012C, S82.013A, S82.013B, S82.013C, S82.014A, S82.014B, S82.014C, S82.015A, S82.015B, S82.015C, S82.016A, S82.016B, S82.016C, S82.021A, S82.021B, S82.021C, S82.022A, S82.022B, S82.022C, S82.023A, S82.023B, S82.023C, S82.024A, S82.024B, S82.024C, S82.025A, S82.025B, S82.025C, S82.026A, S82.026B, S82.026C, S82.031A, S82.031B, S82.031C, S82.032A, S82.032B, S82.032C, S82.033A, S82.033B, S82.033C, S82.034A, S82.034B, S82.034C, S82.035A, S82.035B, S82.035C, S82.036A, S82.036B, S82.036C, S82.041A, S82.041B, S82.041C, S82.042A, S82.042B, S82.042C, S82.043A, S82.043B, S82.043C, S82.044A, S82.044B, S82.044C, S82.045A, S82.045B, S82.045C, S82.046A, S82.046B, S82.046C, S82.091A, S82.091B, S82.091C, S82.092A, S82.092B, S82.092C, S82.099A, S82.099B, S82.099C, S82.101A, S82.101B, S82.101C, S82.102A, S82.102B, S82.102C, S82.109A, S82.109B, S82.109C, S82.111A, S82.111B, S82.111C, S82.112A, S82.112B, S82.112C, S82.113A, S82.113B, S82.113C, S82.114A, S82.114B, S82.114C, S82.115A, S82.115B, S82.115C, S82.116A, S82.116B, S82.116C, S82.121A, S82.121B, S82.121C, S82.122A, S82.122B, S82.122C, S82.123A, S82.123B, S82.123C, S82.124A, S82.124B, S82.124C, S82.125A, S82.125B, S82.125C, S82.126A, S82.126B, S82.126C, S82.131A, S82.131B, S82.131C, S82.132A, S82.132B, S82.132C, S82.133A, S82.133B, S82.133C, S82.134A, S82.134B, S82.134C, S82.135A, S82.135B, S82.135C, S82.136A, S82.136B, S82.136C, S82.141A, S82.141B, S82.141C, S82.142A, S82.142B, S82.142C, S82.143A, S82.143B, S82.143C, S82.144A, S82.144B, S82.144C, S82.145A, S82.145B, S82.145C, S82.146A, S82.146B, S82.146C, S82.151A, S82.151B, S82.151C, S82.152A, S82.152B, S82.152C, S82.153A, S82.153B, S82.153C, S82.154A, S82.154B, S82.154C, S82.155A, S82.155B, S82.155C, S82.156A, S82.156B, S82.156C, S82.161A, S82.162A, S82.169A, S82.191A, S82.191B, S82.191C, S82.192A, S82.192B, S82.192C, S82.199A, S82.199B, S82.199C, S82.201A, S82.201B, S82.201C, S82.202A, S82.202B, S82.202C, S82.209A, S82.209B, S82.209C, S82.221A, S82.221B, S82.221C, S82.222A, S82.222B, S82.222C, S82.223A, S82.223B, S82.223C, S82.224A, S82.224B, S82.224C, S82.225A, S82.225B, S82.225C, S82.226A, S82.226B, S82.226C, S82.231A, S82.231B, S82.231C, S82.232A, S82.232B, S82.232C, S82.233A, S82.233B, S82.233C, S82.234A, S82.234B, S82.234C, S82.235A, S82.235B, S82.235C, S82.236A, S82.236B, S82.236C, S82.241A, S82.241B, S82.241C, S82.242A, S82.242B, S82.242C, S82.243A, S82.243B, S82.243C, S82.244A, S82.244B, S82.244C, S82.245A, S82.245B, S82.245C, S82.246A, S82.246B, S82.246C, S82.251A, S82.251B, S82.251C, S82.252A, S82.252B, S82.252C, S82.253A, S82.253B, S82.253C, S82.254A, S82.254B, S82.254C, S82.255A, S82.255B, S82.255C, S82.256A, S82.256B, S82.256C, S82.261A, S82.261B, S82.261C, S82.262A, S82.262B, S82.262C, S82.263A, S82.263B, S82.263C, S82.264A, S82.264B, S82.264C, S82.265A, S82.265B, S82.265C, S82.266A, S82.266B, S82.266C, S82.291A, S82.291B, S82.291C, S82.292A, S82.292B, S82.292C, S82.299A, S82.299B, S82.299C, S82.301A, S82.301B, S82.301C, S82.302A, S82.302B, S82.302C, S82.309A, S82.309B, S82.309C, S82.311A, S82.312A, S82.319A, S82.391A, S82.391B, S82.391C, S82.392A, S82.392B, S82.392C, S82.399A, S82.399B, S82.399C, S82.401A, S82.401B, S82.401C, S82.402A, S82.402B, S82.402C, S82.409A, S82.409B, S82.409C, S82.421A, S82.421B, S82.421C, S82.422A, S82.422B, S82.422C, S82.423A, S82.423B, S82.423C, S82.424A, S82.424B, S82.424C, S82.425A, S82.425B, S82.425C, S82.426A, S82.426B, S82.426C, S82.431A, S82.431B, S82.431C, S82.432A, S82.432B, S82.432C, S82.433A, S82.433B, S82.433C, S82.434A, S82.434B, S82.434C, S82.435A, S82.435B, S82.435C, S82.436A, S82.436B, S82.436C, S82.441A, S82.441B, S82.441C, S82.442A, S82.442B, S82.442C, S82.443A, S82.443B, S82.443C, S82.444A, S82.444B, S82.444C, S82.445A, S82.445B, S82.445C, S82.446A, S82.446B, S82.446C, S82.451A, S82.451B, S82.451C, S82.452A, S82.452B, S82.452C, S82.453A, S82.453B, S82.453C, S82.454A, S82.454B, S82.454C, S82.455A, S82.455B, S82.455C, S82.456A, S82.456B, S82.456C, S82.461A, S82.461B, S82.461C, S82.462A, S82.462B, S82.462C, S82.463A, S82.463B, S82.463C, S82.464A, S82.464B, S82.464C, S82.465A, S82.465B, S82.465C, S82.466A, S82.466B, S82.466C, S82.491A, S82.491B, S82.491C, S82.492A, S82.492B, S82.492C, S82.499A, S82.499B, S82.499C, S82.51XA, S82.51XB,

S82.51XC, S82.52XA, S82.52XB, S82.52XC, S82.53XA, S82.53XB, S82.53XC, S82.54XA, S82.54XB, S82.54XC, S82.55XA, S82.55XB, S82.55XC, S82.56XA, S82.56XB, S82.56XC, S82.61XA, S82.61XB, S82.61XC, S82.62XA, S82.62XB, S82.62XC, S82.63XA, S82.63XB, S82.63XC, S82.64XA, S82.64XB, S82.64XC, S82.65XA, S82.65XB, S82.65XC, S82.66XA, S82.66XB, S82.66XC, S82.811A, S82.812A, S82.819A, S82.821A, S82.822A, S82.829A, S82.831A, S82.831B, S82.831C, S82.832A, S82.832B, S82.832C, S82.839A, S82.839B, S82.839C, S82.841A, S82.841B, S82.841C, S82.842A, S82.842B, S82.842C, S82.843A, S82.843B, S82.843C, S82.844A, S82.844B, S82.844C, S82.845A, S82.845B, S82.845C, S82.846A, S82.846B, S82.846C, S82.851A, S82.851B, S82.851C, S82.852A, S82.852B, S82.852C, S82.853A, S82.853B, S82.853C, S82.854A, S82.854B, S82.854C, S82.855A, S82.855B, S82.855C, S82.856A, S82.856B, S82.856C, S82.861A, S82.861B, S82.861C, S82.862A, S82.862B, S82.862C, S82.863A, S82.863B, S82.863C, S82.864A, S82.864B, S82.864C, S82.865A, S82.865B, S82.865C, S82.866A, S82.866B, S82.866C, S82.871A, S82.871B, S82.871C, S82.872A, S82.872B, S82.872C, S82.873A, S82.873B, S82.873C, S82.874A, S82.874B, S82.874C, S82.875A, S82.875B, S82.875C, S82.876A, S82.876B, S82.876C, S82.891A, S82.891B, S82.891C, S82.892A, S82.892B, S82.892C, S82.899A, S82.899B, S82.899C, S82.90XA, S82.90XB, S82.90XC, S82.91XA, S82.91XB, S82.91XC, S82.92XA, S82.92XB, S82.92XC, S89.001A, S89.002A, S89.009A, S89.011A, S89.012A, S89.019A, S89.021A, S89.022A, S89.029A, S89.031A, S89.032A, S89.039A, S89.041A, S89.042A, S89.049A, S89.091A, S89.092A, S89.099A, S89.101A, S89.102A, S89.109A, S89.111A, S89.112A, S89.119A, S89.121A, S89.122A, S89.129A, S89.131A, S89.132A, S89.139A, S89.141A, S89.142A, S89.149A, S89.191A, S89.192A, S89.199A, S89.201A, S89.202A, S89.209A, S89.211A, S89.212A, S89.219A, S89.221A, S89.222A, S89.229A, S89.291A, S89.292A, S89.299A, S89.301A, S89.302A, S89.309A, S89.311A, S89.312A, S89.319A, S89.321A, S89.322A, S89.329A, S89.391A, S89.392A, S89.399A, S92.001A, S92.001B, S92.002A, S92.002B, S92.009A, S92.009B, S92.011A, S92.011B, S92.012A, S92.012B, S92.013A, S92.013B, S92.014A, S92.014B, S92.015A, S92.015B, S92.016A, S92.016B, S92.021A, S92.021B, S92.022A, S92.022B, S92.023A, S92.023B, S92.024A, S92.024B, S92.025A, S92.025B, S92.026A, S92.026B, S92.031A, S92.031B, S92.032A, S92.032B, S92.033A, S92.033B, S92.034A, S92.034B, S92.035A, S92.035B, S92.036A, S92.036B, S92.041A, S92.041B, S92.042A, S92.042B, S92.043A, S92.043B, S92.044A, S92.044B, S92.045A, S92.045B, S92.046A, S92.046B, S92.051A, S92.051B, S92.052A, S92.052B, S92.053A, S92.053B, S92.054A, S92.054B, S92.055A, S92.055B, S92.056A, S92.056B, S92.061A, S92.061B, S92.062A, S92.062B, S92.063A, S92.063B, S92.064A, S92.064B, S92.065A, S92.065B, S92.066A, S92.066B, S92.101A, S92.101B, S92.102A, S92.102B, S92.109A, S92.109B, S92.111A, S92.111B, S92.112A, S92.112B, S92.113A, S92.113B, S92.114A, S92.114B, S92.115A, S92.115B, S92.116A, S92.116B, S92.121A, S92.121B, S92.122A, S92.122B, S92.123A, S92.123B, S92.124A, S92.124B, S92.125A, S92.125B, S92.126A, S92.126B, S92.131A, S92.131B, S92.132A, S92.132B, S92.133A, S92.133B, S92.134A, S92.134B, S92.135A, S92.135B, S92.136A, S92.136B, S92.141A, S92.141B, S92.142A, S92.142B, S92.143A, S92.143B, S92.144A, S92.144B, S92.145A, S92.145B, S92.146A, S92.146B, S92.151A, S92.151B, S92.152A, S92.152B, S92.153A, S92.153B, S92.154A, S92.154B, S92.155A, S92.155B, S92.156A, S92.156B, S92.191A, S92.191B, S92.192A, S92.192B, S92.199A, S92.199B, S92.201A, S92.201B, S92.202A, S92.202B, S92.209A, S92.209B, S92.211A, S92.211B, S92.212A, S92.212B, S92.213A, S92.213B, S92.214A, S92.214B, S92.215A, S92.215B, S92.216A, S92.216B, S92.221A, S92.221B, S92.222A, S92.222B, S92.223A, S92.223B, S92.224A, S92.224B, S92.225A, S92.225B, S92.226A, S92.226B, S92.231A, S92.231B, S92.232A, S92.232B, S92.233A, S92.233B, S92.234A, S92.234B, S92.235A, S92.235B, S92.236A, S92.236B, S92.241A, S92.241B, S92.242A, S92.242B, S92.243A, S92.243B, S92.244A, S92.244B, S92.245A, S92.245B, S92.246A, S92.246B, S92.251A, S92.251B, S92.252A, S92.252B, S92.253A, S92.253B, S92.254A, S92.254B, S92.255A, S92.255B, S92.256A, S92.256B, S92.301A, S92.301B, S92.302A, S92.302B, S92.309A, S92.309B, S92.311A, S92.311B, S92.312A, S92.312B, S92.313A, S92.313B, S92.314A, S92.314B, S92.315A, S92.315B, S92.316A, S92.316B, S92.321A, S92.321B, S92.322A, S92.322B, S92.323A, S92.323B, S92.324A, S92.324B, S92.325A, S92.325B, S92.326A, S92.326B, S92.331A, S92.331B, S92.332A, S92.332B, S92.333A, S92.333B, S92.334A, S92.334B, S92.335A, S92.335B, S92.336A, S92.336B, S92.341A, S92.341B,



S92.342A, S92.342B, S92.343A, S92.343B, S92.344A, S92.344B, S92.345A, S92.345B, S92.346A, S92.346B, S92.351A, S92.351B, S92.352A, S92.352B, S92.353A, S92.353B, S92.354A, S92.354B, S92.355A, S92.355B, S92.356A, S92.356B, S92.811A, S92.811B, S92.812A, S92.812B, S92.819A, S92.819B, S92.901A, S92.901B, S92.902A, S92.902B, S92.909A, S92.909B, S99.001A, S99.001B, S99.002A, S99.002B, S99.009A, S99.009B, S99.011A, S99.011B, S99.012A, S99.012B, S99.019A, S99.019B, S99.021A, S99.021B, S99.022A, S99.022B, S99.029A, S99.029B, S99.031A, S99.031B, S99.032A, S99.032B, S99.039A, S99.039B, S99.041A, S99.041B, S99.042A, S99.042B, S99.049A, S99.049B, S99.091A, S99.091B, S99.092A, S99.092B, S99.099A, S99.099B, S99.101A, S99.101B, S99.102A, S99.102B, S99.109A, S99.109B, S99.111A, S99.111B, S99.112A, S99.112B, S99.119A, S99.119B, S99.121A, S99.121B, S99.122A, S99.122B, S99.129A, S99.129B, S99.131A, S99.131B, S99.132A, S99.132B, S99.139A, S99.139B, S99.141A, S99.141B, S99.142A, S99.142B, S99.149A, S99.149B, S99.191A, S99.191B, S99.192A, S99.192B, S99.199A, S99.199B

**AND**

**Patient procedure during the performance period (CPT Codes):** 22310, 22315, 22318, 22319, 22325, 22326, 22327, 22510, 22511, 22513, 22514, 25600, 25605, 25606, 25607, 25608, 25609, 27230, 27232, 27235, 27236, 27238, 27240, 27244, 27245, 27246, 27248

**NUMERATOR:**

Patients with documentation of communication with the physician or other clinician managing the patient's on-going care that a fracture occurred and that the patient was or should be considered for osteoporosis testing or treatment

**Definition:**

**Communication** – May include documentation in the medical record indicating that the clinician treating the fracture communicated (e.g., verbally, by letter, through shared electronic health record, a bone mineral density test report was sent) with the clinician managing the patient's on-going care OR a copy of a letter in the medical record outlining whether the patient was or should be treated for osteoporosis.

**Numerator Quality-Data Coding Options:**

**Patient receiving Hospice Services, Patient Not Eligible:**

**Denominator Exclusion: G9688:** Patient using hospice services any time during the measurement period

**OR**

**Post Fracture Care Communication Documented**

**Performance Met: CPT II 5015F:** Documentation of communication that a fracture occurred and that the patient was or should be tested or treated for osteoporosis

**OR**

**Post Fracture Care not Communicated, Reason not Otherwise Specified**

Append a submission modifier (8P) to CPT Category II code 5015F to submit circumstances when the action described in the numerator is not performed and the reason is not otherwise specified.

**Performance Not Met: 5015F with 8P:** No documentation of communication that a fracture occurred and that the patient was or should be tested or treated for osteoporosis, reason not otherwise specified

**RATIONALE:**

This measure aims to improve the communication and coordination from the physician treating the fracture in the acute care setting to the physician or clinician who is responsible for follow-up care for osteoporosis. Patients who experience a fragility fracture should either be treated or screened for the presence of osteoporosis. Although the fracture may be treated by the orthopedic surgeon, the testing and/or treatment is likely to be under the responsibility of the physician providing on-going care. It is important the physician or other clinician providing on-going care for the

patient be made aware the patient has sustained a fracture so that the proper care and treatment plan can be put in place to prevent a secondary fracture from occurring. This measure holds the physician who treated the fracture accountable for this communication to the on-going care provider.

**CLINICAL RECOMMENDATION STATEMENTS:**

The most important risk factors for osteoporosis-related fractures are a prior low-trauma fracture as an adult and a low BMD in patients with or without fractures. (AACE) BMD measurement should be performed in all women 40 years old or older who have sustained a fracture. (AACE)

The decision to measure bone density should follow an individualized approach. It should be considered when it will help the patient decide whether to institute treatment to prevent osteoporotic fracture. It should also be considered in patients receiving glucocorticoid therapy for 2 months or more and patients with other conditions that place them at high risk for osteoporotic fracture. (NIH)

The most commonly used measurement to diagnose osteoporosis and predict fracture risk is based on assessment of BMD by dual-energy X-ray absorptiometry (DXA). (NIH) Measurements of BMD made at the hip predict hip fracture better than measurements made at other sites while BMD measurement at the spine predicts spine fracture better than measures at other sites. (NIH)

The single most powerful predictor of a future osteoporotic fracture is the presence of previous such fractures. (AGA)

**COPYRIGHT:**

Physician Performance Measures (Measures) and related data specifications have been developed by the PCPI® Foundation (PCPI®) and the National Committee for Quality Assurance (NCQA). These Measures are not a clinical guideline and does not establish a standard of medical care, and has not been tested for all potential applications. The Measures, while copyrighted, can be reproduced and distributed, without modification, for noncommercial purposes, eg, use by health care providers in connection with their practices. Commercial use is defined as the sale, license, or distribution of the Measures for commercial gain, or incorporation of the Measures into a product or service that is sold, licensed or distributed for commercial gain. Commercial uses of the Measures require a license agreement between the user and the PCPI® or NCQA. Neither the American Medical Association (AMA), nor the former AMA-convened Physician Consortium for Performance Improvement(R), PCPI, NCQA nor its members shall be responsible for any use of the Measure. © 2019 NCQA and PCPI® Foundation. All Rights Reserved.

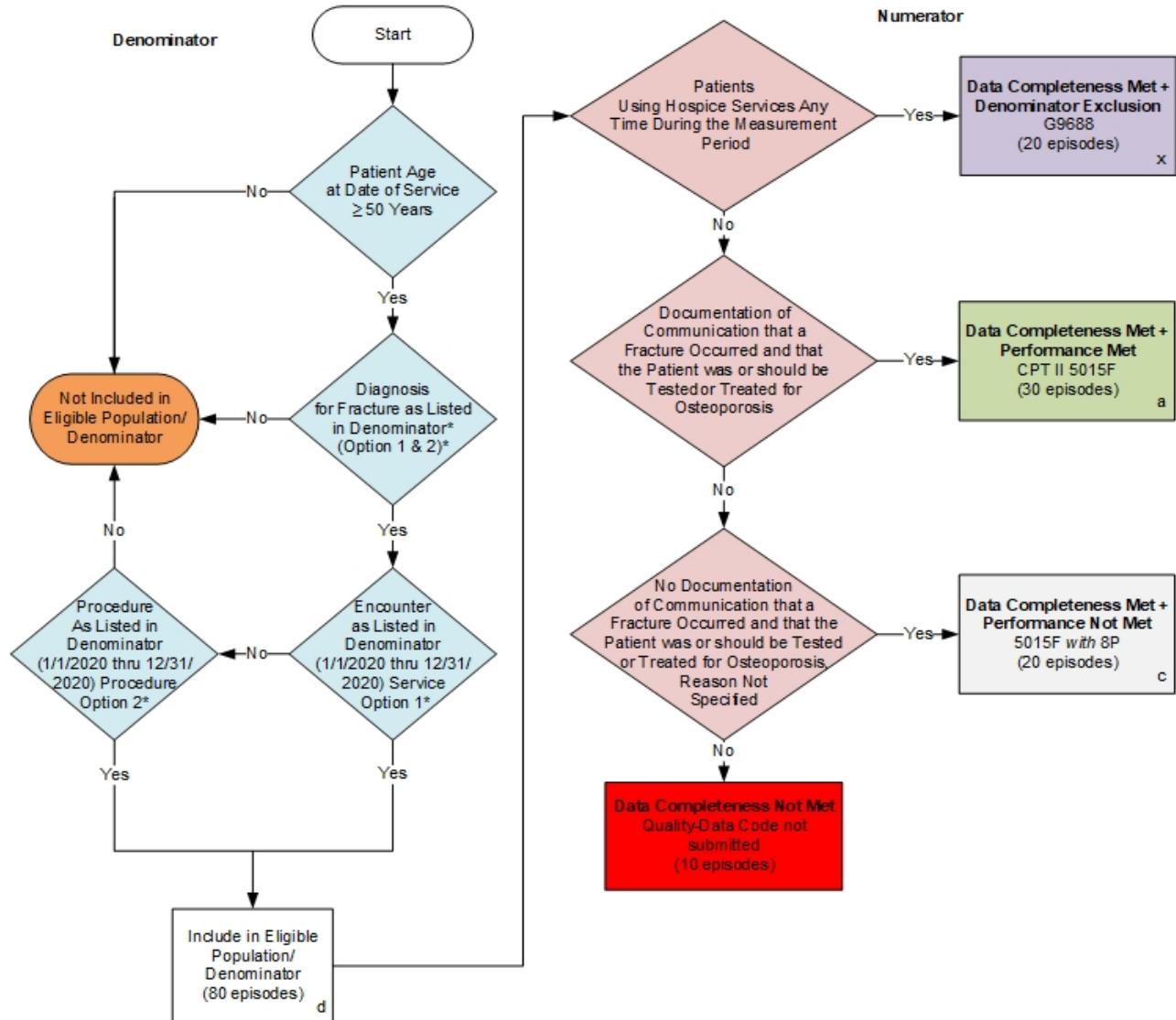
THE MEASURES AND SPECIFICATIONS ARE PROVIDED "AS IS" WITHOUT WARRANTY OF ANY KIND.

Limited proprietary coding is contained in the Measure specifications for user convenience. Users of proprietary code sets should obtain all necessary licenses from the owners of the code sets. NCQA disclaims all liability for use or accuracy of any CPT or other codes contained in the specifications.

CPT® contained in the Measure specifications is copyright 2004-2019 American Medical Association. LOINC® copyright 2004-2019 Regenstrief Institute, Inc. This material contains SNOMED Clinical Terms® (SNOMED CT®) copyright 2004-2019 International Health Terminology Standards Development Organisation. ICD-10 copyright 2019 World Health Organization. All Rights Reserved.

**2020 Medicare Part B Claims Flow for Quality ID #24:  
Communication with the Physician or Other Clinician Managing On-Going Care Post-Fracture for  
Men and Women Aged 50 Years and Older**

**Disclaimer:** Refer to the measure specification for specific coding and instructions to submit this measure.



**SAMPLE CALCULATIONS:**

**Data Completeness=**  

$$\frac{\text{Denominator Exclusion (x=20 episodes) + Performance Met (a=30 episodes) + Performance Not Met (c=20 episodes)}}{\text{Eligible Population / Denominator (d=80 episodes)}} = \frac{70 \text{ episodes}}{80 \text{ episodes}} = 87.50\%$$

**Performance Rate=**  

$$\frac{\text{Performance Met (a=30 episodes)}}{\text{Data Completeness Numerator (70 episodes) - Denominator Exclusion (x=20 episodes)}} = \frac{30 \text{ episodes}}{50 \text{ episodes}} = 60.00\%$$

\*See the posted measure specification for specific coding and instructions to submit this measure.  
 NOTE: Submission Frequency: Episode

CPT only copyright 2019 American Medical Association. All rights reserved.  
 The measure diagrams were developed by CMS as a supplemental resource to be used in conjunction with the measure specifications. They should not be used alone or as a substitution for the measure specification.

**2020 Medicare Part B Claims Flow Narrative for Quality ID #24:**  
**Communication with the Physician or Other Clinician Managing On-Going Care Post-Fracture for**  
**Men and Women Aged 50 Years and Older**

***Disclaimer:*** Refer to the measure specification for specific coding and instructions to submit this measure.

1. Start with Denominator
2. Check Patient Age:
  - a. If Patient Age at Date of Encounter is equal to or greater than 50 Years equals No during the performance period, do not include in Eligible Population. Stop Processing.
  - b. If Patient Age at Date of Encounter is equal to or greater than 50 Years equals Yes during the performance period, proceed to check Patient Diagnosis.
3. Check Patient Diagnosis:
  - a. If Diagnosis for Fracture as Listed in the Denominator equals No, do not include in Eligible Population. Stop Processing.
  - b. If Diagnosis for Fracture as Listed in the Denominator equals Yes, proceed to check Encounter Service Option 1.
4. Check Encounter Service Option 1:
  - a. If Encounters Service Option 1 as Listed in the Denominator equals No, proceed to check Encounter Procedure Option 2.
  - b. If Encounters Service Option 1 as Listed in the Denominator equals Yes, include in Eligible Population.
5. Check Encounter Procedure Option 2:
  - a. If Encounters Procedure Option 2 as Listed in the Denominator equals No, do not include in Eligible Population. Stop Processing.
  - b. If Encounters Procedure Option 2 as Listed in the Denominator equals Yes, include in the Eligible Population.
6. Denominator Population:
  - a. Denominator Population is all Eligible Episodes in the Denominator. Denominator is represented as Denominator in the Sample Calculation listed at the end of this document. Letter d equals 80 episodes in the Sample Calculation.
7. Start Numerator
8. Check Patient Using Hospice Services Any Time During the Measurement Period:

- a. If Patient Using Hospice Services Any Time During the Measurement Period equals Yes, include in Data Completeness Met and Denominator Exclusion.
  - b. Data Completeness Met and Denominator Exclusion letter is represented as Data Completeness and Performance Rate in the Sample Calculation listed at the end of this document. Letter x equals 20 episodes in the Sample Calculation.
  - c. If Patient Using Hospice Services Any Time During the Measurement Period equals No, proceed to check Documentation of Communication that a Fracture Occurred and that the Patient was or should be Tested or Treated for Osteoporosis.
9. Check Documentation of Communication that a Fracture Occurred and that the Patient was or should be Tested or Treated for Osteoporosis:
  - a. If Documentation of Communication that a Fracture Occurred and that the Patient was or should be Tested or Treated for Osteoporosis equals Yes, include in Data Completeness Met and Performance Met.
  - b. Data Completeness Met and Performance Met letter is represented as Data Completeness and Performance Rate in the Sample Calculation listed at the end of this document. Letter a equals 20 episodes in the Sample Calculation.
  - c. If Documentation of Communication that a Fracture Occurred and that the Patient was or should be Tested or Treated for Osteoporosis equals No, proceed to check No Documentation of Communication that a Fracture Occurred and that the Patient was or should be Tested or Treated for Osteoporosis, Reason Not Specified.
10. Check No Documentation of Communication that a Fracture Occurred and that the Patient was or should be Tested or Treated for Osteoporosis, Reason Not Specified:
  - a. If No Documentation of Communication that a Fracture Occurred and that the Patient was or should be Tested or Treated for Osteoporosis, Reason Not Specified equals Yes, include in Data Completeness Met and Performance Not Met.
  - b. Data Completeness Met and Performance Not Met letter is represented as Data Completeness in the Sample Calculation listed at the end of this document. Letter c equals 20 episodes the Sample Calculation.
  - c. If No Documentation of Communication that a Fracture Occurred and that the Patient was or should be Tested or Treated for Osteoporosis, Reason Not Specified equals No, proceed to check Data Completeness Not Met.
11. Check Data Completeness Not Met:
  - a. If Data Completeness Not Met, the Quality Data Code was not submitted. 10 episodes have been subtracted from the Data Completeness Numerator in the Sample Calculation.

**SAMPLE CALCULATIONS:**

**Data Completeness=**

$$\frac{\text{Denominator Exclusion (x=20 episodes)} + \text{Performance Met (a=30 episodes)} + \text{Performance Not Met (c=20 episodes)}}{\text{Eligible Population / Denominator (d=80 episodes)}} = \frac{70 \text{ episodes}}{80 \text{ episodes}} = 87.50\%$$

**Performance Rate=**

$$\frac{\text{Performance Met (a=30 episodes)}}{\text{Data Completeness Numerator (70 episodes) - Denominator Exclusion (x=20 episodes)}} = \frac{30 \text{ episodes}}{50 \text{ episodes}} = 60.00\%$$